

# CCA Orientation Briefing 2025 (Students)



Debate Trial change to  
~~17th~~ 15th Jan and 22nd Jan

# CCA Orientation 2024



- I will try to answer most of your “questions” throughout the whole of the Briefing.
  - So please do not rush to ask a question during the briefing. There is sufficient time for Question-and-answer at the end.

## **What are CCAs for?**

**Our CCAs aim to develop the students' potential outside of the academic field in the following ways:**

- Provide for physical, social and mental development
- Cultivate desirable values and attitudes
- Inculcate a sense of belonging in school
- Provide opportunities for the development of leadership skills and competencies.
- Cultivate lifelong interests and skills
- Develop healthy lifestyles

# How many CCA sessions are there per week?

- Depending on the CCA selected, the no. of days range from 1 to 3 days.
- The number of days are carefully calibrated to allow enough time for the students to learn their skills well.
- Do keep in mind that your CCA should be selected based on your interests, rather than purely on the number of days.
- Interest more important than more/lesser days.

**Every student must**  
**participate in at least one**  
**CCA in the school**  
**throughout the student's 4**  
**or 5-year stay in the**  
**school.**

# Exceptions

- National Youth Sports Team

Please approach Mr Chan directly if you qualify

# Benefits of staying in your CCA (same CCA)

Continuation of the skills and friendships that you have developed.

Additional recognition through CCA points. (Participation)

Attain Bonus Points for your post-secondary education.

## CCA Bonus points

Excellent = 2 bonus points

Good = 1 bonus point

Fair = 0 bonus points



## How can these bonus points be used?

Hit qualifying mark for the type of institution or programme first, then used to differentiate applicants

For example, you want to get into a course in ITE, Poly or JC that has a cut-off of 15 points.

You scored 15 for your 'N' or 'O' Levels - **The lower the better.** **Similar to your ALs**

If you have an 'Excellent' for your LEAPS, you can make use of your 2 bonus points. You end up with 13, instead of 15.

- Good = 1 bonus point

**75% of students get 2 Bonus points.**

Students in UGs, Sports and Performing Arts are more likely to gain 2 bonus points

**What do we need to achieve/do to get these 2 bonus points?**

Refer to your student e-handbook.

Mr Chan will do a briefing for the level later in the year.

Short summary: Attend all CCA sessions, contribute to your CCAs, participate in competitions, do your best

LEAPS 2.0 recognises students' experiential learning and attainment in the 4 domains of the co-curriculum.

It is not confined to just their CCA experiences/contributions.

# Challenges

CCAs will take up your time, CCAs will be challenging. **But very enriching.**

Adopt a Growth Mindset. Do your best. Stick at it.

Some of you may experience new activities, failure, difficulties.

Nothing worthwhile ever comes easy. Anything that is easy, is not worthwhile.

## CCAs offered in CHIJ? (Sports and Games)

Badminton

Basketball

Bowling

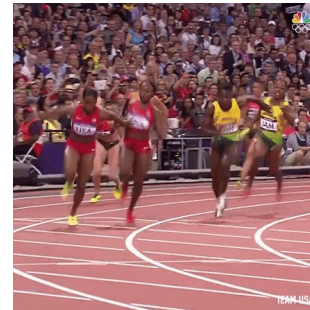
**Netball (Sch Team)**

Netball Recreational Club

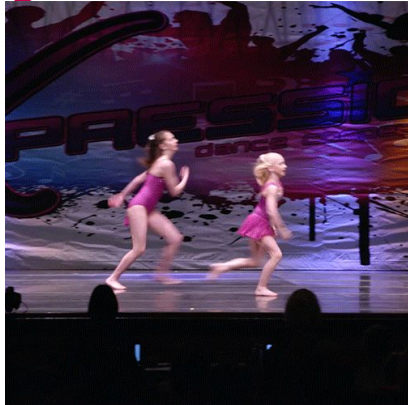
Rhythmic Gymnastics

Tennis

Track and Field



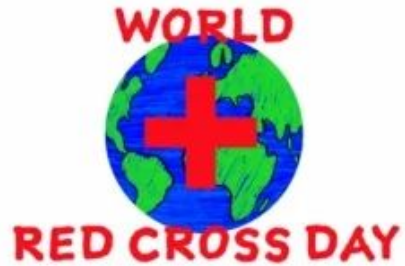
# CCAs offered in CHIJ? (Visual & Performing Arts)



Arts Alive!  
**Choir**  
Concert Band  
Guitar Ensemble  
IJ Dance Ensemble  
**IJ Theatre**



# CCAs offered in CHIJ? (Uniformed Groups)



Girl Guides

Red Cross Youth

National Cadet Corps  
(Sea)



# CCAs offered in CHIJ? (Clubs & Societies)



Automation and Robotics Club (ARC)

Debating and Oratory Society

iGROW@IJ

IJ Media Club

IJ Youth Mission

Chinese Cultural Society (华艺社)

Legion of Mary (2nd CCA only)





# Different CCAs have different entry requirements

\*, +, @, #

Be sure to know, plan and attend the  
trials/auditions.

**If you did not pass the trial, IT IS VERY VERY UNLIKELY you will be allocated to that CCA.**  
**(except for Arts Alive and Media Club)**

| Sports and Games                   | Visual & Performing Arts                                                                                                                                                                                                                                                                                                     | Uniformed Groups             | Clubs and Societies                  |
|------------------------------------|------------------------------------------------------------------------------------------------------------------------------------------------------------------------------------------------------------------------------------------------------------------------------------------------------------------------------|------------------------------|--------------------------------------|
| Badminton *                        | Arts Alive! @                                                                                                                                                                                                                                                                                                                | Girl Guides +                | Automation and Robotics Club (ARC) * |
| Basketball *                       | Choir *                                                                                                                                                                                                                                                                                                                      | Red Cross Youth #            | Chinese Cultural Society (华艺社)#      |
| Bowling *                          | Concert Band +                                                                                                                                                                                                                                                                                                               | National Cadet Corps (Sea) + | Debating & Oratory Society *         |
| Netball (Sch Team) *               | Guitar Ensemble +                                                                                                                                                                                                                                                                                                            |                              | IJ Media Club @                      |
| Netball Recreational Club *        | IJ Dance Ensemble *                                                                                                                                                                                                                                                                                                          |                              | iGrow@IJ #                           |
| Rhythmic Gymnastics *              | IJ Theatre *                                                                                                                                                                                                                                                                                                                 |                              | IJ Youth Mission #                   |
| Squash (not recruiting Sec 1 2023) |                                                                                                                                                                                                                                                                                                                              |                              | Legion of Mary (2nd CCA)             |
| Tennis *                           |                                                                                                                                                                                                                                                                                                                              |                              |                                      |
| Track and Field *                  | <p>* these CCAs require <b><u>ALL</u></b> students to pass trials/auditions.<br/> + these CCAs conduct trials/auditions, but students are NOT required to pass the trials/auditions<br/> @ these CCAs require <b><u>SOME</u></b> students to pass trials/auditions<br/> # these CCAs do not require any trials/auditions</p> |                              |                                      |

<http://tinyurl.com/CHIJCCTrials2025>

Only can be seen through moe.edu.sg email address.

Will also be printed out and placed outside the Hall by 28 January 2025 (Tuesday).

Start of trials/CCA Selection period

CCAs that require trials

CCAs  
that don't  
require  
trials

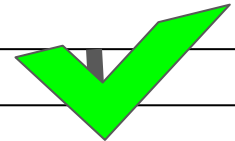
Attend trials

Passed Trial

Did not  
pass Trial

Did not pass Trial  
(Arts Alive & Media Club)

Submission of 6 CCA Choices



# Different CCAs have different entry requirements

Be sure to know, plan and attend the  
trials/auditions.

If you did not pass the trial, IT IS VERY VERY  
UNLIKELY you will be allocated to that CCA.

\*

| Netball Recreational                                                        |      |                                                                            |      |       |
|-----------------------------------------------------------------------------|------|----------------------------------------------------------------------------|------|-------|
| Confirmed Offers (Number of names should at least match the MAXIMUM intake) |      | Waiting List (Number of names should be at least 25% of MAXIMUM allowable) |      |       |
|                                                                             | Name | Class                                                                      | Name | Class |
| 1                                                                           |      | ▼                                                                          | 1    | ▼     |
| 2                                                                           |      | ▼                                                                          | 2    | ▼     |
| 3                                                                           |      | ▼                                                                          | 3    | ▼     |
| 4                                                                           |      | ▼                                                                          | 4    | ▼     |
| 5                                                                           |      | ▼                                                                          | 5    | ▼     |
| 6                                                                           |      | ▼                                                                          |      | ▼     |
| 7                                                                           |      | ▼                                                                          |      | ▼     |
| 8                                                                           |      | ▼                                                                          |      | ▼     |
| 9                                                                           |      | ▼                                                                          |      | ▼     |
| 10                                                                          |      | ▼                                                                          |      | ▼     |
| 11                                                                          |      | ▼                                                                          |      | ▼     |
| 12                                                                          |      | ▼                                                                          |      | ▼     |
| 13                                                                          |      | ▼                                                                          |      | ▼     |
| 14                                                                          |      | ▼                                                                          |      | ▼     |
| 15                                                                          |      | ▼                                                                          |      | ▼     |
| 16                                                                          |      | ▼                                                                          |      | ▼     |
| 17                                                                          |      | ▼                                                                          |      | ▼     |
| 18                                                                          |      | ▼                                                                          |      | ▼     |



|    | A | B                                                                                  | C     | D | E                                                                                 | F     | G |  |
|----|---|------------------------------------------------------------------------------------|-------|---|-----------------------------------------------------------------------------------|-------|---|--|
| 1  |   | <b>Arts Alive!</b>                                                                 |       |   |                                                                                   |       |   |  |
| 2  |   | <b>Confirmed Offers</b> (Number of names should at least match the MAXIMUM intake) |       |   | <b>Waiting List</b> (Number of names should be at least 25% of MAXIMUM allowable) |       |   |  |
| 3  |   | Name                                                                               | Class |   | Name                                                                              | Class |   |  |
| 4  | 1 |                                                                                    | ▼     | 1 |                                                                                   | ▼     |   |  |
| 5  | 2 |                                                                                    | ▼     | 2 |                                                                                   | ▼     |   |  |
| 6  | 3 |                                                                                    | ▼     | 3 |                                                                                   | ▼     |   |  |
| 7  | 4 |                                                                                    | ▼     |   |                                                                                   | ▼     |   |  |
| 8  | 5 |                                                                                    | ▼     |   |                                                                                   | ▼     |   |  |
| 9  |   | <b>5 spaces in CCA (out of 15) reserved for portfolio submission</b>               |       |   |                                                                                   |       |   |  |
| 10 |   | Remainder of students will be allocated by ballot.                                 |       |   |                                                                                   |       |   |  |
| 11 |   |                                                                                    |       |   |                                                                                   |       |   |  |
| 12 |   |                                                                                    |       |   |                                                                                   |       |   |  |



|    | A  | B                                                                                  | C       | D                                                                                 | E    | F     | G |
|----|----|------------------------------------------------------------------------------------|---------|-----------------------------------------------------------------------------------|------|-------|---|
| 1  |    | <b>Concert Band (NEED NOT PASS TRIAL TO JOIN CCA)</b>                              |         |                                                                                   |      |       |   |
| 2  |    | <b>Confirmed Offers</b> (Number of names should at least match the MAXIMUM intake) |         | <b>Waiting List</b> (Number of names should be at least 25% of MAXIMUM allowable) |      |       |   |
| 3  |    | Name                                                                               | Class   |                                                                                   | Name | Class |   |
| 4  | 1  | BEATRIZ TANIWAN                                                                    | 1 Clare | 1                                                                                 |      |       |   |
| 5  | 2  |                                                                                    |         | 2                                                                                 |      |       |   |
| 6  | 3  |                                                                                    |         | 3                                                                                 |      |       |   |
| 7  | 4  |                                                                                    |         | 4                                                                                 |      |       |   |
| 8  | 5  |                                                                                    |         | 5                                                                                 |      |       |   |
| 9  | 6  |                                                                                    |         | 6                                                                                 |      |       |   |
| 10 | 7  |                                                                                    |         | 7                                                                                 |      |       |   |
| 11 | 8  |                                                                                    |         | 8                                                                                 |      |       |   |
| 12 | 9  |                                                                                    |         | 9                                                                                 |      |       |   |
| 13 | 10 |                                                                                    |         | 10                                                                                |      |       |   |
| 14 | 11 |                                                                                    |         |                                                                                   |      |       |   |
| 15 | 12 |                                                                                    |         |                                                                                   |      |       |   |
| 16 | 13 |                                                                                    |         |                                                                                   |      |       |   |
| 17 | 14 |                                                                                    |         |                                                                                   |      |       |   |
| 18 | 15 |                                                                                    |         |                                                                                   |      |       |   |
| 19 | 16 |                                                                                    |         |                                                                                   |      |       |   |
| 20 | 17 |                                                                                    |         |                                                                                   |      |       |   |



Tennis

Track and Field

Arts Alive

Band

Choir

Dance

Theatre



#

These CCAs do not conduct  
any trials and anyone may  
apply

\*

| 1  |    | Choir                                                                              |             |                                                                                   |                          |          |
|----|----|------------------------------------------------------------------------------------|-------------|-----------------------------------------------------------------------------------|--------------------------|----------|
| 2  |    | <b>Confirmed Offers</b> (Number of names should at least match the MAXIMUM intake) |             | <b>Waiting List</b> (Number of names should be at least 25% of MAXIMUM allowable) |                          |          |
| 3  |    | Name                                                                               | Class       | Name                                                                              | Class                    |          |
| 4  | 1  | RHEA WADHAWAN (DSA)                                                                | 1 Angela    | 1                                                                                 | Kathlyn Srinivasan       | 1 Clare  |
| 5  | 2  | THAM JING LIN GISELE (DSA)                                                         | 1 Marianne  | 2                                                                                 | Duppati Mokshitha Raghni | 1 Helena |
| 6  | 3  | VIVIAN ELIZABETH OEI (DSA)                                                         | 1 Bridget   | 3                                                                                 | Etasha Tandon            | 1 Louise |
| 7  | 4  | DIYA ABHILASH (DSA)                                                                | 1 Marianne  | 4                                                                                 |                          |          |
| 8  | 5  | Nguyen Do Khanh Phuong                                                             | 3 Clare     | 5                                                                                 |                          |          |
| 9  | 6  | Hasika Lodiya                                                                      | 1 Frances   | 6                                                                                 |                          |          |
| 10 | 7  | Nguyen Tue Tam                                                                     | 3 Clare     |                                                                                   |                          |          |
| 11 | 8  | Laohajaroensombat Ornpicha                                                         | 3 Marianne  |                                                                                   |                          |          |
| 12 | 9  | Thais Elizabeth Goh Keyne                                                          | 1 Clare     |                                                                                   |                          |          |
| 13 | 10 | Ariane Tan                                                                         | 1 Bridget   |                                                                                   |                          |          |
| 14 | 11 | Lau Kor En Ines                                                                    | 1 Elizabeth |                                                                                   |                          |          |
| 15 | 12 | Liew Yen Shan                                                                      | 1 Bridget   |                                                                                   |                          |          |

\*

| 1  |    | Choir                                                                              |         |                                                                                   |       |
|----|----|------------------------------------------------------------------------------------|---------|-----------------------------------------------------------------------------------|-------|
| 2  |    | <b>Confirmed Offers</b> (Number of names should at least match the MAXIMUM intake) |         | <b>Waiting List</b> (Number of names should be at least 25% of MAXIMUM allowable) |       |
| 3  |    | Name                                                                               | Class   | Name                                                                              | Class |
| 4  | 1  |                                                                                    |         |                                                                                   |       |
| 5  | 2  |                                                                                    |         |                                                                                   |       |
| 6  | 3  |                                                                                    |         |                                                                                   |       |
| 7  | 4  |                                                                                    |         |                                                                                   |       |
| 8  | 5  | Nguyen Do Khanh Phuong                                                             | 3 Clare | 5                                                                                 |       |
| 9  | 6  |                                                                                    |         | 6                                                                                 |       |
| 10 | 7  |                                                                                    |         |                                                                                   |       |
| 11 | 8  |                                                                                    |         |                                                                                   |       |
| 12 | 9  |                                                                                    |         |                                                                                   |       |
| 13 | 10 |                                                                                    |         |                                                                                   |       |
| 14 | 11 |                                                                                    |         |                                                                                   |       |
| 15 | 12 |                                                                                    |         |                                                                                   |       |

“Match made in heaven”- Student passed trial and student chose the CCA as her 1st choice

\*

| 1  |    | Choir                                                                       |       |                                                                            |       |
|----|----|-----------------------------------------------------------------------------|-------|----------------------------------------------------------------------------|-------|
| 2  |    | Confirmed Offers (Number of names should at least match the MAXIMUM intake) |       | Waiting List (Number of names should be at least 25% of MAXIMUM allowable) |       |
| 3  |    | Name                                                                        | Class | Name                                                                       | Class |
| 4  | 1  | [Greyed out]                                                                |       | [Greyed out]                                                               |       |
| 5  | 2  |                                                                             |       |                                                                            |       |
| 6  | 3  |                                                                             |       |                                                                            |       |
| 7  | 4  |                                                                             |       |                                                                            |       |
| 8  | 5  |                                                                             |       |                                                                            |       |
| 9  | 6  |                                                                             |       |                                                                            |       |
| 10 | 7  |                                                                             |       |                                                                            |       |
| 11 | 8  |                                                                             |       |                                                                            |       |
| 12 | 9  |                                                                             |       |                                                                            |       |
| 13 | 10 |                                                                             |       |                                                                            |       |
| 14 | 11 | [Greyed out]                                                                |       |                                                                            |       |
| 15 | 12 |                                                                             |       |                                                                            |       |

“Student rejected CCA”- Student passed trial and student **did not** choose the CCA

\*

| 1  |    | Choir                                                                       |       |                                                                            |                          |          |  |
|----|----|-----------------------------------------------------------------------------|-------|----------------------------------------------------------------------------|--------------------------|----------|--|
| 2  |    | Confirmed Offers (Number of names should at least match the MAXIMUM intake) |       | Waiting List (Number of names should be at least 25% of MAXIMUM allowable) |                          |          |  |
| 3  |    | Name                                                                        | Class | Name                                                                       | Class                    |          |  |
| 4  | 1  |                                                                             |       |                                                                            |                          |          |  |
| 5  | 2  |                                                                             |       | 2                                                                          | Duppati Mokshitha Raghni | 1 Helena |  |
| 6  | 3  |                                                                             |       |                                                                            |                          |          |  |
| 7  | 4  |                                                                             |       | 4                                                                          |                          |          |  |
| 8  | 5  |                                                                             |       | 5                                                                          |                          |          |  |
| 9  | 6  |                                                                             |       | 6                                                                          |                          |          |  |
| 10 | 7  |                                                                             |       |                                                                            |                          |          |  |
| 11 | 8  |                                                                             |       |                                                                            |                          |          |  |
| 12 | 9  |                                                                             |       |                                                                            |                          |          |  |
| 13 | 10 |                                                                             |       | Ariane Tan                                                                 | 1 Bridget                |          |  |
| 14 | 11 |                                                                             |       |                                                                            |                          |          |  |
| 15 | 12 |                                                                             |       |                                                                            |                          |          |  |

“Wait List activated”- Student on wait list and other students **did not** choose the CCA

Some spaces in  
**Arts Alive! And Media Club**

Will be reserved for students who  
pass their trial.

The remaining slots will be allocated  
by ballot.

## Fill in these details:

1. Selection of CCA Choices (Choice 1 to 6, at least 2 of the following)
  - Band
  - NCC (Sea), Red Cross, Girl Guides
1. Medical Conditions
2. Height / Weight
3. Main CCA in Pri Sch / Years in CCA / Achievements
4. Additional information (related to CCA Choices)

# Things to take note of when making CCA Choices:

- You must attend the necessary trials / auditions.
- Look at the **Trials Results** before you make your choices. Confirmed Offer vs Waiting List. If you are NOT on these lists, it is unlikely that you will be allocated to that CCA.
- Choose **6 different choices**. Those with less than 6 different choices will be allocated last.
- Choose the CCAs that you will be **staying in for 4 or 5 years**. It should be an activity that you know you will enjoy.
- Each girl **MUST** indicate at least 2 of these: Band, NCC (Sea), Red Cross, Girl Guides.



# Frequently Asked Questions

## What if I am a DSA student?

You will not need to submit your 6 choices, but still attend the CCA Orientation to understand your classmates' CCAs. An opportunity for you to try something new too.

## Do we need to attend both days of trials/auditions?

Students only need to attend either one of the trials/auditions.

# Frequently Asked Questions

## What if there is a clash in my trial dates?

1. Plan your schedule such that you are able to attend the necessary trials.
2. If that is not possible, speak to the respective CCA teachers to see if you can possibly attend half the trial at one CCA, then the 2nd CCA at a later time.
3. You are growing older, so learn to manage these things on your own with the teachers. Try not to involve your parents, as you will be the one going for the trial.

# Frequently Asked Questions

Are Sec 1 students allowed to start CCA training before the final CCA Allocation results are announced/put up?

If Sec 1 students would like to start training with the CCA (before the final CCA Allocation), they should approach Mr Daryl Chan for his permission individually first.

Can we appeal to join another CCA, after our final CCA Allocation is announced?

Students can appeal, but transfers will only be approved on a case-by-case basis, based on the circumstances provided, as well as the availability of places in the desired CCA.

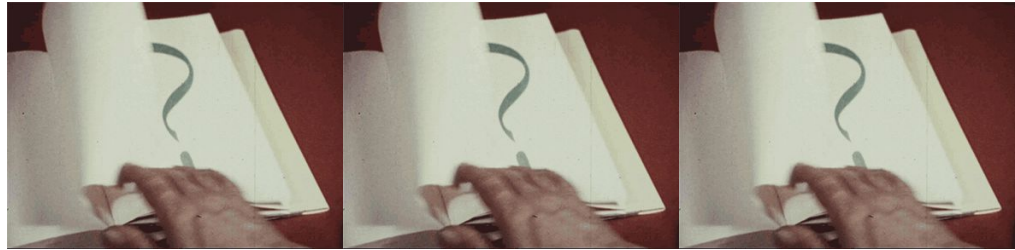
# Things to do from now till Friday:

- Take a look at the list of CCAs offered (in the CCA handbook)
- Shortlist the CCAs that you are interested in
- Take note of the time you will be visiting the respective booths during the CCA Orientation and plan your time accordingly.

|           | 1 Angela                                   | 1 Bridget     | 1 Clare       | 1 Elizabeth   | 1 Frances     | 1 Helen       | 1 Louise      | 1 Marianne    |
|-----------|--------------------------------------------|---------------|---------------|---------------|---------------|---------------|---------------|---------------|
| 1240-1340 | Performing Arts Showcase (@ Hall of Faith) |               |               |               |               |               |               |               |
| 1340-1420 | Lunch                                      |               |               |               |               |               |               |               |
| 1420-1440 | Quad Raphael                               | Quad Gabriel  | Canteen Right | Canteen Left  | Hall Right    | Hall Left     | ISH Far       | ISH Near      |
| 1440-1455 | Quad Gabriel                               | Quad Raphael  | Canteen Left  | Canteen Right | Hall Left     | Hall Right    | ISH Near      | ISH Far       |
| 1455-1515 | Canteen Right                              | Canteen Left  | Hall Right    | Hall Left     | ISH Far       | ISH Near      | Quad Raphael  | Quad Gabriel  |
| 1515-1530 | Canteen Left                               | Canteen Right | Hall Left     | Hall Right    | ISH Near      | ISH Far       | Quad Gabriel  | Quad Raphael  |
| 1530-1550 | Hall Right                                 | Hall Left     | ISH Far       | ISH Near      | Quad Raphael  | Quad Gabriel  | Canteen Right | Canteen Left  |
| 1550-1605 | Hall Left                                  | Hall Right    | ISH Near      | ISH Far       | Quad Gabriel  | Quad Raphael  | Canteen Left  | Canteen Right |
| 1605-1625 | ISH Far                                    | ISH Near      | Quad Raphael  | Quad Gabriel  | Canteen Right | Canteen Left  | Hall Right    | Hall Left     |
| 1625-1640 | ISH Near                                   | ISH Far       | Quad Gabriel  | Quad Raphael  | Canteen Left  | Canteen Right | Hall Left     | Hall Right    |

|           |                                               |
|-----------|-----------------------------------------------|
|           | 1 Angela                                      |
| 1240-1340 | Performing Arts Showcase<br>(@ Hall of Faith) |
| 1340-1420 | Lunch                                         |
| 1420-1440 | Quad Raphael                                  |
| 1440-1455 | Quad Gabriel                                  |
| 1455-1515 | Canteen Right                                 |
| 1515-1530 | Canteen Left                                  |
| 1530-1550 | Hall Right                                    |
| 1550-1605 | Hall Left                                     |
| 1605-1625 | ISH Far                                       |
| 1625-1640 | ISH Near                                      |

# Any questions?



# CCA Orientation Briefing 2025 (Parents)





## **What are CCAs for?**

**Our CCAs aim to develop the students' potential outside of the academic field in the following ways:**

- Provide for physical, social and mental development
- Cultivate desirable values and attitudes
- Inculcate a sense of belonging in school
- Provide opportunities for the development of leadership skills and competencies.
- Cultivate lifelong interests and skills
- Develop healthy lifestyles

# How many CCA sessions are there per week?

- Depending on the CCA selected, the no. of days range from 1 to 3 days.
- The number of days are carefully calibrated to allow enough time for the students to learn their skills well.
- Do keep in mind that your daughter's CCA should be selected based on your daughter's interests, rather than purely on the number of days.
- Interest more important than lesser days.

**Every student** must  
participate in **at least one**  
**school-based CCA**  
**throughout** the student's **4**  
**or 5-year stay** in the  
**school.**

# Challenges

## CCAs will take up some of their time.

It is a good opportunity to learn time management skills, as well as learning how to prioritise the things that need to be done.

## CCAs will be challenging for them.

A great chance to develop a Growth Mindset. Encourage them to do their best and persevere on.

## Some may experience new activities, failure, difficulties.

Nothing worthwhile ever comes easy. Anything that is easy, is not worthwhile.

## **75% of students achieve an Excellent Grade and 2 Bonus points.**

Students in UGs, Sports and Performing Arts are more likely to gain 2 bonus points

## **What do they need to achieve these 2 bonus points?**

Refer to the student e-handbook.

I will do a briefing for the level later in the year.

Short summary: Attend all CCA sessions, contribute to their CCAs, participate in competitions, do their best

## How can these bonus points be used?

Hit qualifying mark for the type of institution or programme first, then used to differentiate applicants

For example, your daughter would like to get into a course in ITE, Poly or JC that has a cut-off of 15 points.

She scores 15 for your 'N' or 'O' Levels - **The lower the better.** **Similar to the ALs**

If she achieves an 'Excellent' for her LEAPS, she can make use of her 2 bonus points. She ends up with 13, instead of 15.

- Good = 1 bonus point

LEAPS 2.0 recognises students' experiential learning and attainment in the 4 domains of the co-curriculum.

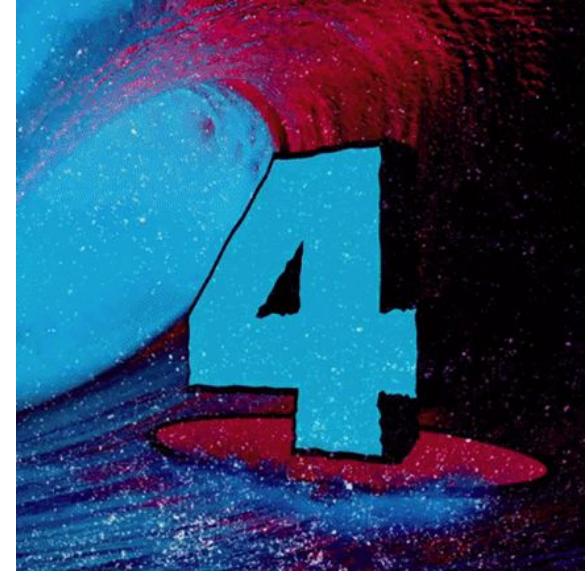
It is not confined to just their CCA experiences/contributions.

# 4 domains under LEAPS2.0

1. Leaderships
2. Achievement
3. Participation
4. Service

**Why is it called LEAPS then?**

Enrichment had been taken out.





# CCAs offered in CHIJ? (Sports and Games)

Badminton

Basketball

Bowling

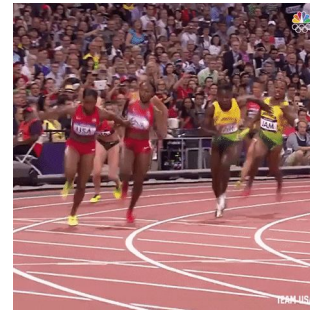
Netball (Sch Team)

Netball Recreational Club

Rhythmic Gymnastics

Tennis

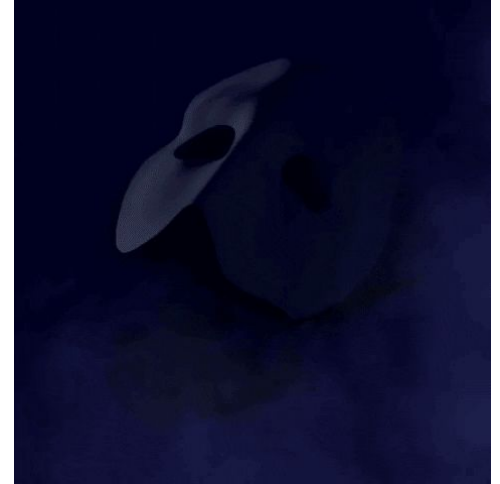
Track and Field



# CCAs offered in CHIJ? (Visual & Performing Arts)



Arts Alive!  
Choir  
Concert Band  
Guitar Ensemble  
IJ Dance Ensemble  
IJ Theatre



# CCAs offered in CHIJ? (Uniformed Groups)



Girl Guides

Red Cross Youth

National Cadet Corps  
(Sea)



# CCAs offered in CHIJ? (Clubs & Societies)



Automation and Robotics Club (ARC)  
Debating and Oratory Society

iGROW@IJ

IJ Media Club

IJ Youth Mission

Chinese Cultural Society (华艺社)

Legion of Mary (2nd CCA only)



# What did your daughter experience at each CCA booth?

- The opportunity to ask questions about the CCA or experience some activities that the CCA may involve.
- Even if they were not interested in the activities, they had the opportunity to find out what their classmates will be doing in their CCAs.

# Different CCAs have different entry requirements

\*, +, @, #

Be sure to know, plan and attend the  
trials/auditions.

**If they did not pass the trial, IT IS VERY VERY  
UNLIKELY you will be allocated to that CCA.  
(except for Arts Alive and Media Club)**

| Sports and Games            | Visual & Performing Arts                                                                                                                                                                                                                                                                                       | Uniformed Groups             | Clubs and Societies                  |
|-----------------------------|----------------------------------------------------------------------------------------------------------------------------------------------------------------------------------------------------------------------------------------------------------------------------------------------------------------|------------------------------|--------------------------------------|
| Badminton *                 | Arts Alive! @                                                                                                                                                                                                                                                                                                  | Girl Guides +                | Automation and Robotics Club (ARC) * |
| Basketball *                | Choir *                                                                                                                                                                                                                                                                                                        | Red Cross Youth +            | Chinese Cultural Society (华艺社)#      |
| Bowling *                   | Concert Band +                                                                                                                                                                                                                                                                                                 | National Cadet Corps (Sea) + | Debating & Oratory Society *         |
| Netball (Sch Team) *        | Guitar Ensemble +                                                                                                                                                                                                                                                                                              |                              | IJ Media Club @                      |
| Netball Recreational Club * | IJ Dance Ensemble *                                                                                                                                                                                                                                                                                            |                              | iGrow@IJ #                           |
| Rhythmic Gymnastics *       | IJ Theatre *                                                                                                                                                                                                                                                                                                   |                              | IJ Youth Mission #                   |
| Tennis *                    |                                                                                                                                                                                                                                                                                                                |                              | Legion of Mary (2nd CCA)             |
| Track and Field *           |                                                                                                                                                                                                                                                                                                                |                              |                                      |
|                             | <p>* these CCAs require <b>ALL</b> students to pass trials/auditions.<br/> + these CCAs conduct trials/auditions, but students are NOT required to pass the trials/auditions<br/> @ these CCAs require <b>SOME</b> students to pass trials/auditions<br/> # these CCAs do not require any trials/auditions</p> |                              |                                      |

# CCA Trials and Auditions Results

[tinyurl.com/CHIJCCATrial2024](https://tinyurl.com/CHIJCCATrial2024)

Only can be seen through moe.edu.sg email address.

Will also be printed out and placed outside the Hall by 22 January 2024 (Monday).



\*

| Netball Recreational                                                        |       |                                                                            |       |
|-----------------------------------------------------------------------------|-------|----------------------------------------------------------------------------|-------|
| Confirmed Offers (Number of names should at least match the MAXIMUM intake) |       | Waiting List (Number of names should be at least 25% of MAXIMUM allowable) |       |
| Name                                                                        | Class | Name                                                                       | Class |
| 1                                                                           | ▼     | 1                                                                          | ▼     |
| 2                                                                           | ▼     | 2                                                                          | ▼     |
| 3                                                                           | ▼     | 3                                                                          | ▼     |
| 4                                                                           | ▼     | 4                                                                          | ▼     |
| 5                                                                           | ▼     | 5                                                                          | ▼     |
| 6                                                                           | ▼     |                                                                            | ▼     |
| 7                                                                           | ▼     |                                                                            | ▼     |
| 8                                                                           | ▼     |                                                                            | ▼     |
| 9                                                                           | ▼     |                                                                            | ▼     |
| 10                                                                          | ▼     |                                                                            | ▼     |
| 11                                                                          | ▼     |                                                                            | ▼     |
| 12                                                                          | ▼     |                                                                            | ▼     |
| 13                                                                          | ▼     |                                                                            | ▼     |
| 14                                                                          | ▼     |                                                                            | ▼     |
| 15                                                                          | ▼     |                                                                            | ▼     |
| 16                                                                          | ▼     |                                                                            | ▼     |
| 17                                                                          | ▼     |                                                                            | ▼     |
| 18                                                                          | ▼     |                                                                            | ▼     |



|    | A | B                                                                                  | C     | D | E                                                                                 | F     | G |  |
|----|---|------------------------------------------------------------------------------------|-------|---|-----------------------------------------------------------------------------------|-------|---|--|
| 1  |   | <b>Arts Alive!</b>                                                                 |       |   |                                                                                   |       |   |  |
| 2  |   | <b>Confirmed Offers</b> (Number of names should at least match the MAXIMUM intake) |       |   | <b>Waiting List</b> (Number of names should be at least 25% of MAXIMUM allowable) |       |   |  |
| 3  |   | Name                                                                               | Class |   | Name                                                                              | Class |   |  |
| 4  | 1 |                                                                                    | ▼     | 1 |                                                                                   | ▼     |   |  |
| 5  | 2 |                                                                                    | ▼     | 2 |                                                                                   | ▼     |   |  |
| 6  | 3 |                                                                                    | ▼     | 3 |                                                                                   | ▼     |   |  |
| 7  | 4 |                                                                                    | ▼     |   |                                                                                   | ▼     |   |  |
| 8  | 5 |                                                                                    | ▼     |   |                                                                                   | ▼     |   |  |
| 9  |   | <b>5 spaces in CCA (out of 15) reserved for portfolio submission</b>               |       |   |                                                                                   |       |   |  |
| 10 |   | Remainder of students will be allocated by ballot.                                 |       |   |                                                                                   |       |   |  |
| 11 |   |                                                                                    |       |   |                                                                                   |       |   |  |
| 12 |   |                                                                                    |       |   |                                                                                   |       |   |  |



|    | A  | B                                                                                  | C       | D                                                                                 | E    | F     | G |
|----|----|------------------------------------------------------------------------------------|---------|-----------------------------------------------------------------------------------|------|-------|---|
| 1  |    | <b>Concert Band (NEED NOT PASS TRIAL TO JOIN CCA)</b>                              |         |                                                                                   |      |       |   |
| 2  |    | <b>Confirmed Offers</b> (Number of names should at least match the MAXIMUM intake) |         | <b>Waiting List</b> (Number of names should be at least 25% of MAXIMUM allowable) |      |       |   |
| 3  |    | Name                                                                               | Class   |                                                                                   | Name | Class |   |
| 4  | 1  | BEATRIZ TANIWAN                                                                    | 1 Clare | 1                                                                                 |      |       |   |
| 5  | 2  |                                                                                    |         | 2                                                                                 |      |       |   |
| 6  | 3  |                                                                                    |         | 3                                                                                 |      |       |   |
| 7  | 4  |                                                                                    |         | 4                                                                                 |      |       |   |
| 8  | 5  |                                                                                    |         | 5                                                                                 |      |       |   |
| 9  | 6  |                                                                                    |         | 6                                                                                 |      |       |   |
| 10 | 7  |                                                                                    |         | 7                                                                                 |      |       |   |
| 11 | 8  |                                                                                    |         | 8                                                                                 |      |       |   |
| 12 | 9  |                                                                                    |         | 9                                                                                 |      |       |   |
| 13 | 10 |                                                                                    |         | 10                                                                                |      |       |   |
| 14 | 11 |                                                                                    |         |                                                                                   |      |       |   |
| 15 | 12 |                                                                                    |         |                                                                                   |      |       |   |
| 16 | 13 |                                                                                    |         |                                                                                   |      |       |   |
| 17 | 14 |                                                                                    |         |                                                                                   |      |       |   |
| 18 | 15 |                                                                                    |         |                                                                                   |      |       |   |
| 19 | 16 |                                                                                    |         |                                                                                   |      |       |   |
| 20 | 17 |                                                                                    |         |                                                                                   |      |       |   |



Tennis

Track and Field

Arts Alive

Band

Choir

Dance

Theatre

Start of trials/CCA Selection period

CCAs that require trials

CCAs  
that don't  
require  
trials

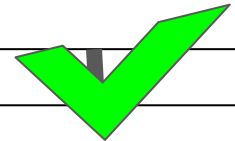
Attend trials

Passed Trial

Did not  
pass Trial

Did not pass Trial  
(Arts Alive & Media Club)

Submission of 6 CCA Choices



# Things to take note of when making CCA Choices:

- She must attend the necessary trials / auditions.
- Look at the [Trials Results](#) before she makes her choices. Confirmed Offer vs Waiting List. If she is NOT on these lists, it is unlikely that she will be allocated to that CCA.
- Choose **6 different choices**. Those with less than 6 different choices will be allocated last.
- Choose the CCAs that she will be **staying in for 4 or 5 years**. It should be an activity that she knows she will enjoy.

# Frequently Asked Questions

What if my child/ward is a DSA student?

She will not need to submit your 6 choices, but still attend the CCA Orientation to understand her classmates' CCAs. An opportunity for her to try something new too.

Do we need to attend both days of trials/auditions?

Students only need to attend either one of the trials/auditions.

# Any questions?

