



# Release of GCE O-Level Examination Results

11 January 2024

**CONVENT OF THE HOLY INFANT JESUS  
SECONDARY**



# Information on JAE Application (for 4E5N students only)



# Joint Admissions Exercise (JAE)

- Students who wish to apply for admission to junior colleges (JC), Millenia Institute (MI), polytechnics, and the Institute of Technical Education (ITE) may do so via the JAE using their GCE O-Level examination results.
- Eligible candidates will receive a **digital copy of Form A** via their registered email addresses **from 2pm on Thur, 11 Jan 2024**.
- All candidates eligible for JAE may also download a copy of Form A from the JAE-Internet System (JAE-IS) during the application period.



# Submitting Course Choices during JAE

- The JAE-IS will be accessible from 4.00pm on Thursday, 11 January 2024, to 4.00pm on Tuesday, 16 January 2024
- Applicants should submit their course choices through the JAE website at [www.moe.gov.sg/jae](http://www.moe.gov.sg/jae). The JAE-IS can be accessed using Singpass.
- Applicants are strongly encouraged to use the JAE worksheet ([www.moe.gov.sg/jaeworksheet](http://www.moe.gov.sg/jaeworksheet)) before submitting their online application.



Ministry of Education  
SINGAPORE

Name : TEST NAME 111 Address : 111 BUKIT BATOK EAST AVENUE 1 #11 -11 SINGAPORE 1111111 School Code : 1111	000684-3005 Centre Index No. : 222222217
---	---

Please apply your course choices by **DD/MM/YYYY, 04:00 PM.****Your 20XX GCE O-Level Examination results:**

ENGLISH LANGUAGE = A1, HIGHER CHINESE = A1, CHINESE = B3, MATHEMATICS = A2, ADDITIONAL  
 MATHEMATICS = A1, PHYSICS = B3, CHEMISTRY = B4, HUMANITIES (SOCIAL STUDIES, HISTORY) = A1,  
 LITERATURE IN ENGLISH = B3

CCA = EXCELLENT

**Your aggregate scores:**

JC	MI	Polytechnic				ITE		
L1R5	L1R4	ELR2B2-A	ELR2B2-B	ELR2B2-C	ELR2B2-D	ELB4-A	ELR1B3-B	ELR2B2-C
11	8	8	8	8	8	8	8	8

**Your eligible courses:**

- You meet the entry requirements for the below courses and are eligible to apply. However, a place in the course is not guaranteed as admission is based on merit, your choices and available vacancies.
- Course codes and descriptions can be found in [www.moe.gov.sg/jaecourses](http://www.moe.gov.sg/jaecourses).

**JC/MI:**

You are eligible for all JC/MI courses.

**Polytechnic/ITE:**

C27 C28 C29 C30 C31 C32 C34 C35 C36 C38 C41 C42 C43 C45 C46 C47 C49 C50 C51  
 C52 C54 C62 C65 C67 C69 C70 C71 C72 C73 C75 C80 C81 C85 C87 C89 C93 C94 C96  
 C97 C98 N11 N12 N13 N14 N15 N40 N41 N42 N43 N44 N45 N48 N50 N51 N53 N54 N55  
 N56 N57 N59 N60 N65 N67 N69 N71 N72 N73 N74 N81 N82 N83 N85 N88 N91 N93 N94  
 N96 N97 N98 R11 R12 R13 R14 R16 R17 R18 R19 R21 R22 R24 R25 R26 R28 R32 R33  
 R34 R35 R36 R37 R39 R40 R42 R43 R45 R46 R47 R48 R49 R50 R52 R54 R55 R56 R57  
 R58 R59 R60 R61 R62 R63 R64 R65 S28 S29 S30 S31 S32 S38 S40 S42 S47 S48 S50  
 S53 S54 S63 S64 S66 S67 S68 S69 S70 S71 S73 S74 S75 S76 S88 S89 S90 S91 S94  
 S95 S98 S99 T01 T02 T04 T07 T08 T09 T10 T13 T18 T20 T22 T23 T25 T26 T28 T29  
 T30 T33 T35 T38 T40 T43 T45 T48 T50 T51 T53 T56 T58 T59 T60 T62 T63 T64 T65  
 T66 T67 T68 T69 T70 T71 V10 V11 V12 V13 V14 V15 V16 V17 V18 V19 V20 V21 V22  
 V23 V24 V25 V26 V27 V28 V29 V30 V35 V39 V40 V41 V42 V44 V47 V49 V52 V54 V55  
 V60 V61 V62 V63 V64 V65 V66 V67 V68 V70 V71 V72 V73 V74 V75 V77 V78 V80 V81  
 V82 V84 V85 V86 V87 V88 V89 V90 V91 V92 V93 V94 V96 V97 V98

Course codes starting with:  
 C - Nanyang Polytechnic  
 N - Ngee Ann Polytechnic  
 R - Republic Polytechnic  
 S - Singapore Polytechnic  
 T - Temasek Polytechnic  
 V - Institute of Technical Education (ITE)

# Submitting Course Choices during JAE

## For Students who applied for DSA-JC / Poly EAE:

- Students who have accepted their DSA and EAE offers and have met the eligibility criteria / minimum entry requirements are not eligible to participate in JAE.
- Students who have accepted their offers but did not meet eligibility criteria / minimum entry requirements are eligible to apply for JC/Polytechnic admission via JAE for courses which they are eligible for.



# More Information about JAE

- Applicants can find more information on the following websites:
  - JAE website for more details on the JAE ([www.moe.gov.sg/jae](http://www.moe.gov.sg/jae))
  - List of courses offered in 2024 JAE (<https://www.moe.gov.sg/-/media/files/post-secondary/2024-jae/2024-jae-courses.pdf>)
  - SchoolFinder for details of the offerings by and previous entry score ranges for JCs and MI ([www.moe.gov.sg/schoolfinder](http://www.moe.gov.sg/schoolfinder))
  - CourseFinder for courses offered by the polytechnics and ITE, based on aggregate type and area of interest ([www.moe.gov.sg/coursefinder](http://www.moe.gov.sg/coursefinder))



# JAE Application Results

- The posting results of the JAE application are scheduled for release on **Thursday, 1 February 2024** through the following modes:
  - Short Message Service (SMS) to the Singapore mobile phone number provided by the applicant during application
  - JAE-IS, which is accessible through the JAE website





# JAE Application Results

- **JCs and MI:** Students are to report to their posted institutions on **Friday, 2 February 2024**.
  - If students are unable to report to their posted JC or MI on the first day of school due to valid reasons, they should contact their posted school directly to confirm that they are taking up the place.
- **Polytechnics or ITE:** Students will receive an email or package via mail on the enrolment details by **end-February 2024**.



# Appeal for Review of Results

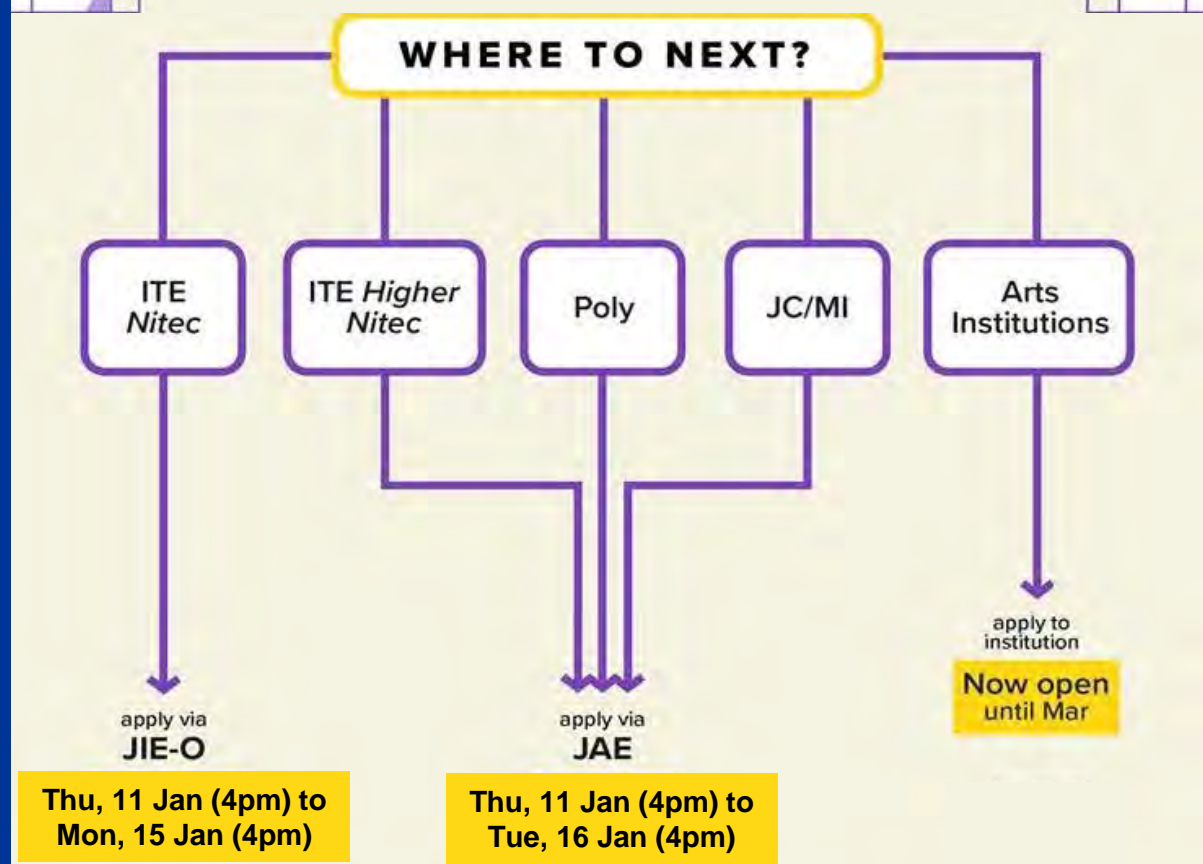
- Deadline: **Wednesday, 17 January 2024**
- Request from the school for the 'Individual Appeal' form
- Fees involved
- Results expected to be released on Tuesday, 27 February 2024 via email



# Post-Secondary Pathways and Educational and Career Guidance (ECG) Support



# Hey, Sec 4 Express & Sec 5N(A) students!



# 4E5N: JC/MI

- **JC:** L1R5 gross aggregate score of **20 points or better** *(excluding bonus points)*
  - If you have applied for DSA-JC, you are eligible for admission to your chosen JC if your gross aggregate score is 20 points or less. You will not be eligible to apply for JAE.
- **MI:** L1R4 gross aggregate score of **20 points or better** *(excluding bonus points)*



# 4E5N: JC/MI Open House



2024  
NATIONAL JUNIOR COLLEGE  
OPEN HOUSE

DATE: 12 JANUARY 2024 (FRIDAY)  
TIME: 0900H - 1330H  
LOCATION: 37 HILLCREST ROAD, SINGAPORE 288913

CHECK US OUT AT OUR SOCIALS!  
@NATIONALJC  
@NATIONALJC  
@NATIONAL Junior College Singapore  
WEBSITE: [HTTPS://WWW.NATIONALJC.MOE.EDU.SG/](https://www.nationaljc.moe.edu.sg/)

INTO THE  
NJC★SME★S

The poster features a space theme with a lion character in a spacesuit, a planet with a lion emblem, and a rocket. The text is in a stylized, glowing font.

## SJI Open House 2024

(FOR JC ADMISSION)  
SATURDAY, 13 JANUARY 2024



CONVENT OF THE HOLY INFANT JESUS  
SECONDARY



# 4E5N: JC/MI Open House



**NANYANG**  
JUNIOR COLLEGE

## Open House 2024

12 January 2024, 0900-1500h



For more details, visit the NYJC Microsite:  
<https://apps.nyjc.edu.sg/openhouse2024/>

LET OUR DREAMS TAKE FLIGHT

**NANYANG JUNIOR COLLEGE**  
128 Serangoon Avenue 3, Singapore 556111

**CONVENT OF THE HOLY INFANT JESUS  
SECONDARY**



# 4E5N: JC/MI Open House



## Eunoia JC Open House

Make a date with us on  
12 Jan, 9 am - 4pm

Discover more at  
[eunoiajc.moe.edu.sg](http://eunoiajc.moe.edu.sg)

Follow us on Instagram  
[@eunoiajc](https://www.instagram.com/eunoiajc)

Visit our campus at  
2 Sin Ming Place



**CONVENT OF THE HOLY INFANT JESUS  
SECONDARY**





# 4E5N: JC/MI Open House



TEMASEK  
JUNIOR COLLEGE

## 2024 JC OPEN HOUSE

12 JAN (FRI)

10:00A.M. - 2:00P.M.

Come visit us at our Tampines Campus!

**Address: 2 Tampines Avenue 9, Singapore 529564.**



*Scan to find out more  
about our exciting  
programmes!*



**We've Made Our Move, What's Yours?**

**CONVENT OF THE HOLY INFANT JESUS  
SECONDARY**



# 4E5N: JC/MI Open House Dates

Anderson Serangoon JC	12 Jan (10am-5pm)
Anglo-Chinese JC	10 Jan (12pm-5pm)
Catholic JC	12 Jan (10am-4pm)
Eunoia JC	12 Jan (9am-4pm)
Hwa Chong Institution	15 Jan (12pm-4pm)
Jurong Pioneer JC	12 Jan (11am-2pm)
Nanyang JC	12 Jan (9am-3pm)

National JC	13 Jan (9am-1pm)
Raffles Institution	12 Jan (10am-2.30pm)
River Valley High	12 Jan (10am-12pm)
St Andrew's JC	12 Jan (9am-4pm)
Temasek JC	12 Jan (10am-2pm)
Victoria JC	13 Jan (9am-1pm)
Millenia Institute	12 Jan (12pm-5pm)



# 4E5N: Open House Dates (Others)

<b>International Baccalaureate (IB)</b>	
Anglo-Chinese School (Independent)	12 Jan (10am-11.30am)
St. Joseph's Institution	13 Jan (9am-11.30am)

<b>Arts Institutions</b>	
Nanyang Academy of Fine Arts (NAFA)	19 – 20 Jan
LASELLE	19 – 20 Jan



# 4E5N: Polytechnics

You will need to meet **both** of the following requirements:

- Net ELR2B2 score of **26 points or better**
- Minimum Entry Requirements (MERs) for the respective polytechnic courses
  - If you have applied for Polytechnic EAE, you are eligible for admission to your chosen course if meet both requirements above. You will not be eligible to apply for JAE.



# 4E5N: Progression to ITE

- **4E5N:** Net ELR2B2 score of **36 points or better** and **minimum entry requirements of course**
  - Students who had accepted conditional offers to an ITE course through the ITE EAE in 2023 and have their offers confirmed based on their GCE O-Level examination results will not be eligible to participate in the JAE.
  - Your EAE offers are confirmed if they meet the subject-specific Minimum Entry Requirements for the course.



# Reminder on Important Dates!

**JAE ([www.moe.gov.sg/jae](http://www.moe.gov.sg/jae))**

**Receive Form A :** Thu, 11 Jan (2pm) *[via email or JAE-IS]*

**Application:** Thu, 11 Jan 2024 (4pm) to Tue, 16 Jan 2024 (4pm) *[via JAE-IS]*

**Release of results:** Thu, 1 Feb 2024 *[via SMS or JAE-IS]*

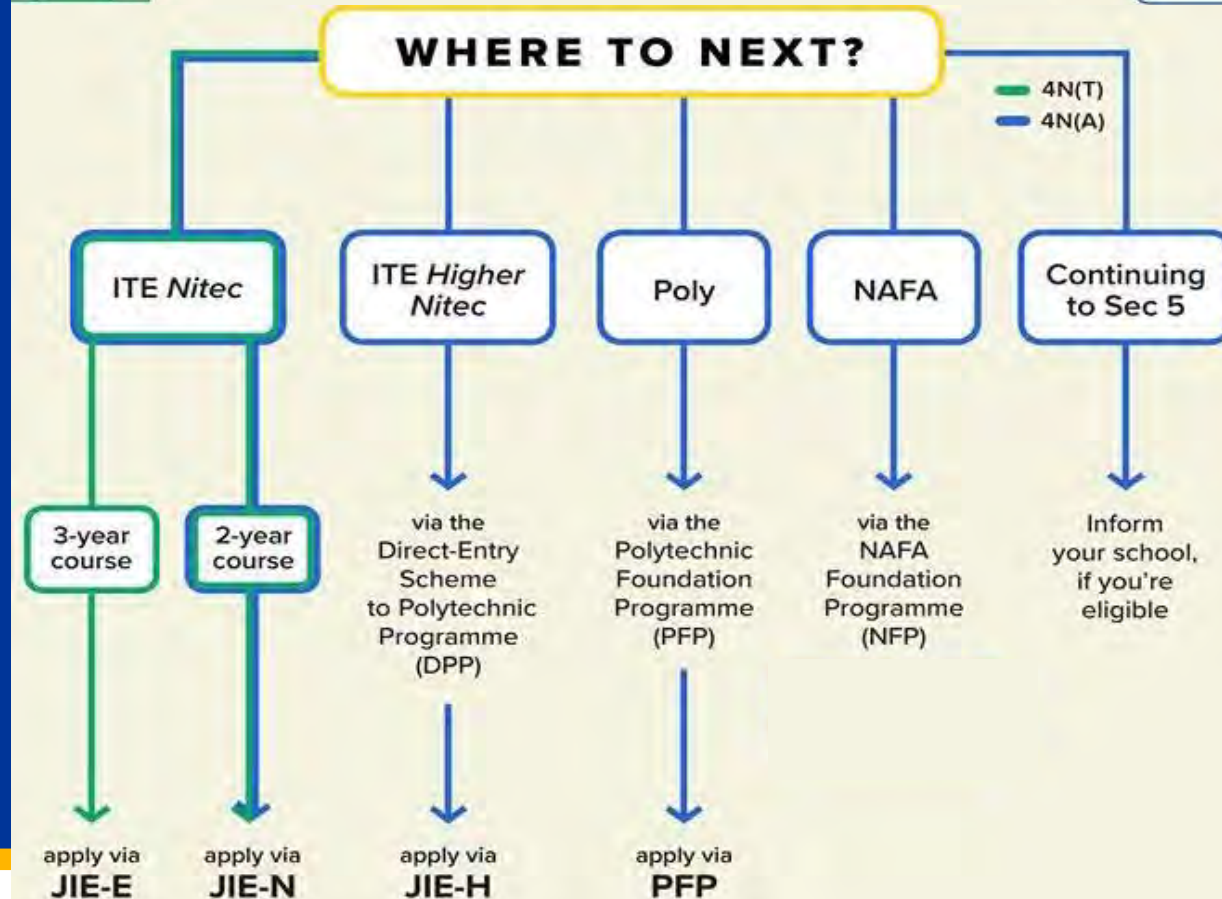
## **Reporting Info:**

JCs/MI: Fri, 2 Feb 2024

Polytechnics/ITE: receive email or package on enrolment details by end-Feb



# Hey, Sec 4N(A) Students!



# 4N[A]: Polytechnic Foundation Programme (PFP)

- The PFP is an alternative to the Secondary 5 N(A) year. It is a one-year foundation programme at the polytechnics that offers a practice-oriented approach to prepare students for entry into the relevant diploma courses.
- Students are eligible to apply for the PFP if they obtain a raw **ELMAB3 aggregate of 12 points or lower**, and **meet the subject-specific requirements for their chosen course.**





# 4N[A]: Polytechnic Foundation Programme (PFP)

- PFP-eligible students will receive a copy of Form P. Each copy of Form P contains a unique password. Interested students should use the respective passwords to submit their applications online via the PFP website at <https://pfp.polytechnic.edu.sg/PFP/index.html>.
- **Applications** for the PFP will be open from 2.00pm on Thursday, 11 January 2024, to 4.00pm on Tuesday, 16 January 2024.



# 4N[A]: Polytechnic Foundation Programme (PFP)

- **Applications** for the PFP will be open from 2.00pm on Thursday, 11 January 2024, to 4.00pm on Tuesday, 16 January 2024.
- The **PFP posting results** will be released at 2.00pm on Tuesday, 23 January 2024 through the PFP website. Students will thereafter be required to indicate whether they wish to accept, reject, or appeal for a change of course by 4.00pm on Friday, 26 January 2024.
- The last day of school for Sec 5 students who have accepted a place in the PFP will be on Friday, 26 January 2024. Students will be informed by the respective polytechnics on the enrolment dates for the PFP.



# 4N[A]: Direct-Entry-Scheme to Polytechnic Programme (DPP)

- The DPP prepares students for progression into selected polytechnic diploma courses via a two-year Higher Nitec course at ITE.
- Students are eligible to apply if they obtain a **raw ELMAB3 aggregate of 19 points or lower**, **and** **meet the subject specific requirements for their chosen course**.
- Eligible Secondary 4 N(A) students may submit their DPP applications online via the DPP application portal at [www.ite.edu.sg/apply-for-ite-courses](http://www.ite.edu.sg/apply-for-ite-courses).



# 4N[A]: Direct-Entry-Scheme to Polytechnic Programme (DPP)

- **Applications** for the DPP will open from 2.00pm on Thursday, 11 January 2024, to 11.59pm on Tuesday, 16 January 2024.
- The **DPP posting results** for applications made under the final application phase will be released at 9.00am on Thursday, 18 January 2024 through the DPP application portal.
- Students will be required to indicate whether they wish to accept or reject the DPP offer by 11.59pm on Monday, 22 January 2024.
- Students who have been offered a place in the DPP under the final application phase should report to ITE on Monday, 22 January 2024 upon acceptance of their DPP course offer.



# 4N[A]: Direct-Entry-Scheme to Polytechnic Programme (DPP)

ITE  
Institute of Technical Education

Who We Are ▾ Colleges ▾ Courses ▾ Admissions ▾ Life@ITE ▾ Employment

**LEARN & GROW WITH ITE**  
DEEP SKILLS • DEEP EXPERIENCE • DEEP PARTNERS  
A NATIONALLY RECOGNISED WORK-STUDY DIPLOMA

Learn & Grow with ITE

Apply for ITE Courses ↗ Course Finder ↗

I am a/an...

Secondary School Student ITE Student Parent Adult Learner

## Intake Exercises for ITE Courses

Full-Time 2-Year *Higher Nitec* Courses (Apr 2024 Intake)

For GCE 'O' Applicants (JAE)

For *Nitec* Progression to *Higher Nitec* (NCHN)

Full-Time 2-Year *Higher Nitec* Courses (Jan 2024 Intake)

Direct Entry Scheme to Polytechnic Programme (DPP) (JIE 'H')

Apply Now

Full-Time 3-Year *Higher Nitec* / 2-Year *Nitec* Courses (Jan 2023 Intake)

For GCE 'N' Applicants (JIE 'N')

Apply Now

For GCE 'O' Applicants (JIE 'O')

For ISC Progression to 3-Year *Higher Nitec* / 2-Year *Nitec* (ISCJ)

Apply Now

Full-Time 4-Year *Higher Nitec* Course with Enhanced Foundation Programme and 3-Year *Nitec* Courses with Enhanced Foundation Programme (Jan 2024 Intake)

For GCE 'N' Applicants (JIE 'E')

Apply Now

CONVENT OF THE HOLY INFANT JESUS  
SECONDARY



# Additional Information – DPP and PFP

- Students who have accepted a place in DPP Phase 1 in December but decide to take up a PFP offer now must withdraw from the DPP first before they are able to take up the PFP offer.
- DPP-enrolled students should check with their ITE class advisor for more details on the DPP withdrawal process and deadlines for withdrawal.



# Reminder on Important Dates!

## **Polytechnic Foundation Programme (PFP)**

**Application:** Thu, 11 Jan 2024 (2pm) to Tue, 16 Jan 2024 (4pm)

**Release of results:** Tue, 23 Jan 2024 (2pm)

**Acceptance of offer:** Tue, 23 Jan 2024 (4pm) to Fri, 26 Jan 2024 (4pm)

**Start of PFP course:** Mon, 15 Apr 2024

## **Direct-Entry-Scheme to Polytechnic Programme (DPP)**

**Application:** Thu, 11 Jan 2024 (2pm) to Tue, 16 Jan 2024 (11.59pm)

**Release of results:** Thu, 18 Jan 2024 (9am)

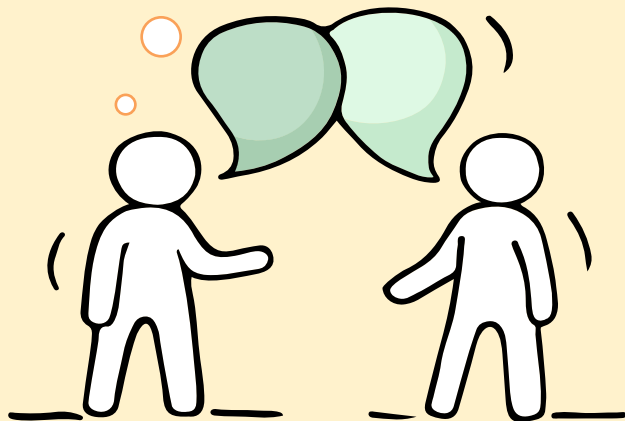
**Start of Higher Nitec Term:** Mon, 1 Apr 2024



# Support is readily available for you.

## Reach out to an ECG Counsellor!

*Who can we  
go to for ECG  
advice?*



Make an appointment to speak with your ECG Counsellor in school at <https://go.gov.sg/chijsharontay>

**OR**

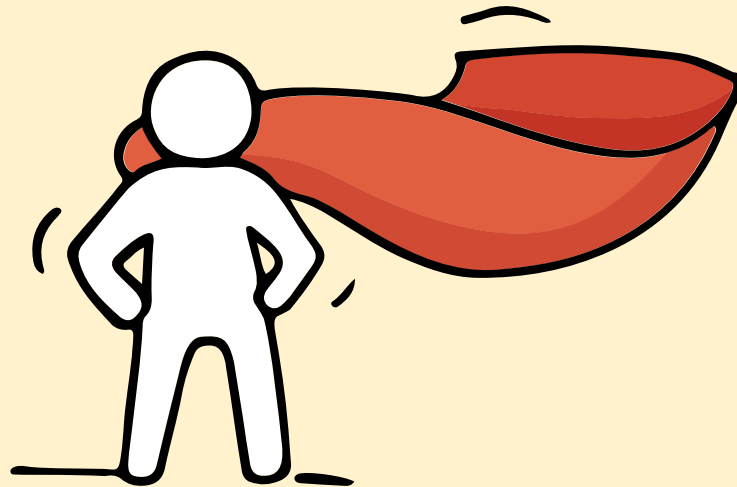
Make an ECG counselling appointment via the ECG Centre @ MOE (Grange Road) at <https://go.gov.sg/moe-ecg-centre>



ECG Counsellor  
Ms Sharon Tay



Remember that while **everyone's educational journey is different, we can each have a fulfilling outcome!**



**The O-Level examination is not the destination.  
It is part of your education journey.**



***“Whatever happens, be always at peace and trust in God.”  
- Blessed Nicolas Barré***