



# Release of GCE N(A)- and N(T)-Level Examination Results

## 16 December 2024

**CONVENT OF THE HOLY INFANT JESUS  
SECONDARY**



# Prayer

Dear God,

We lay before You all our hopes and fears we have about today's outcome.

Grant us peace within us now as we await the results.

We thank You for whatever results we receive, as we trust in Your greater plan for us.

Help us to live in Your goodness and walk with You always.



# What you will receive today

- a) GCE N Level Certificate
- b) Results Slip
- c) Form N – *contains results, eligible courses under JIE and JIE PIN/password*
- d) ITE Admission and Course Information Brochure
- e) The Steeple



# Information on JIE Application (Jan 2025 Intake)



Where am I now?

What can I apply for?

Where do I want to go?

N(T)-Level Student

ITE EAE

JIE 'N'/JIE 'E'

Institute of Technical Education (ITE) (Enhanced Foundation Programme, 2-year Nitec or 3-year Higher Nitec)

N(A)-Level Student

PFP

ITE EAE

JIE 'N'

DPP

NFP

Polytechnic

Institute of Technical Education (ITE) (2-year Nitec or 3-year Higher Nitec)

Institute of Technical Education (ITE) (2-year Higher Nitec)

Nanyang Academy of Fine Arts (NAFA)

Eligible students may also progress to Secondary 5 to take the O-Level examinations. Applications can be made via your secondary school.

EAE: Early Admissions Exercise  
JIE: Joint Intake Exercise  
PFP: Polytechnic Foundation Programme

DPP: Direct-Entry-Scheme to Polytechnic Programme  
NFP: NAFA Foundation Programme



<https://www.moe.gov.sg/post-secondary/admissions>

For more information on applying to these courses, you can visit

<https://ite.edu.sg/admissions/traineeship>

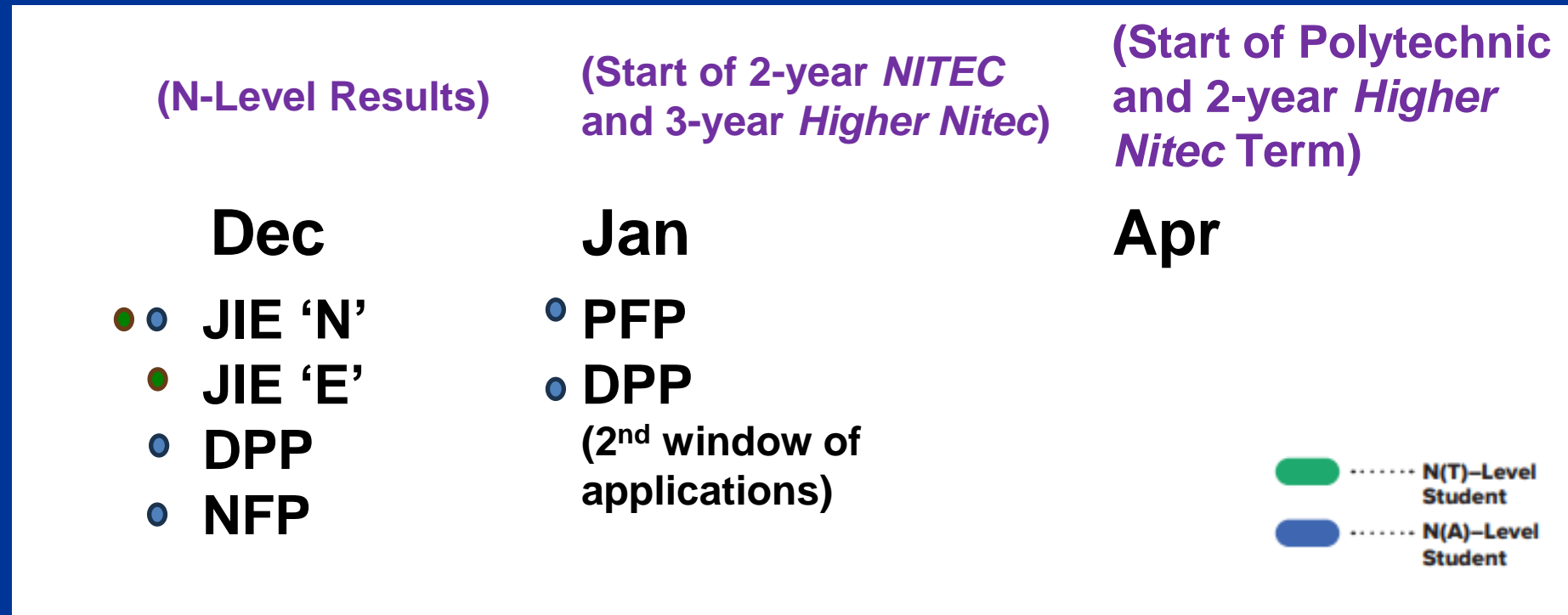
For the list of 3-year Higher Nitec courses, please visit <https://www.ite.edu.sg/courses/full-time-courses/nitec-and-3-year-higher-nitec>

Selected Nitec and Higher Nitec courses are available in traineeship mode.

**CONVENT OF THE HOLY INFANT JESUS  
SECONDARY**



# Admissions Exercises Application Timeline



# Details of Admissions Exercises



## JIE 'N'/JIE 'E' – Joint Intake Exercise

The JIE 'N' is for 2-year *Nitec* or 3-year *Higher Nitec* courses offered by ITE.

The JIE 'E' is for GCE N(T) students to apply for the 3-year *Nitec* course with Enhanced *Nitec* Foundation Programme.



[go.gov.sg/applyjie](https://go.gov.sg/applyjie)

-  ..... **N(T)–Level Student**
-  ..... **N(A)–Level Student**

# Key Dates for Jan 2025 Intake Exercise

Key Activity	Period for 2-Year and 3-Year Nitec Courses, and 3-Year and 4-year Higher Nitec courses	Remarks
<b>1st Phase (Main Phase)</b>		
Application	16 Dec 2024 (2.30pm) to 19 Dec 2024 (5pm)	Apply through the Internet at <a href="https://www.ite.edu.sg">https://www.ite.edu.sg</a> with NRIC / FIN and Date of Birth. You may also apply using SingPass.
Release of Results	30 Dec 2024 at 9am	Check results at <a href="https://istudent.ite.edu.sg">https://istudent.ite.edu.sg</a> with web ID and password
Acceptance of Course Offer Period	30 Dec 2024 to 3 Jan 2025	Accept course offer at <a href="https://istudent.ite.edu.sg">https://istudent.ite.edu.sg</a> with web ID and password
<b>2nd Phase (Late Application/Appeal Phase)</b>		
Application	30 Dec 2024 to 3 Jan 2025	Apply through the Internet at <a href="https://istudent.ite.edu.sg">https://istudent.ite.edu.sg</a> with NRIC / FIN and Date of Birth. You may also apply using SingPass.
Release of Results	10 Jan 2025 at 9am	Check results at <a href="https://istudent.ite.edu.sg">https://istudent.ite.edu.sg</a> with web ID and password
Acceptance of Course Offer Period	10 Jan 2025 to 12 Jan 2025	Accept course offer at <a href="https://istudent.ite.edu.sg">https://istudent.ite.edu.sg</a> with web ID and password
<b>3rd Phase (Final Top-up Phase)</b>		
Application	1 <sup>st</sup> Top-up Phase Application - 10 Jan to 17 Jan 2025 2 <sup>nd</sup> Top-up Phase Application - 23 Jan to 7 Feb 2025	Apply through the Internet at <a href="https://istudent.ite.edu.sg">https://istudent.ite.edu.sg</a> with NRIC / FIN and Date of Birth. You may also apply using SingPass.
Release of Results	1 <sup>st</sup> Top-up Phase - 14 Jan to 23 Jan 2025 2 <sup>nd</sup> Top-up Phase - 23 Jan to 13 Feb 2025	Check results at <a href="https://istudent.ite.edu.sg">https://istudent.ite.edu.sg</a> with web ID and password
Acceptance of Course Offer Period	1 <sup>st</sup> Top-up Phase - 14 Jan to 23 Jan 2025 2 <sup>nd</sup> Top-up Phase - 23 Jan to 13 Feb 2025	Accept course offer at <a href="https://istudent.ite.edu.sg">https://istudent.ite.edu.sg</a> with web ID and password

Jan 2025 Intake Term Commencement Date: **13 Jan 2025**



JUST-IN-TIME INFORMATION ON JIE APPLICATION (JAN 2025 INTAKE)

# Information For Students on Key Dates for Jan 2025 intake

1. All N(A)\* /N(T) school leavers are encouraged to submit an application during the **1<sup>st</sup> Phase (Main Phase)** between **16 Dec 2024 (2.30pm) to 19 Dec 2024 (5pm)**. Application results for the 1<sup>st</sup> Phase will be released on **30 Dec 2024 at 9am**.
2. If you wish to appeal, please accept the course offered **before** applying in the **2<sup>nd</sup> Phase (Late Application/Appeal Phase)** between **30 Dec 2024 to 3 Jan 2025**. The application results for the 2<sup>nd</sup> Phase will be known on **10 Jan 2025 at 9am**.
3. Unsuccessful applicants can appeal under the **3<sup>rd</sup> Phase (Final Top-up Phase)** between **10 Jan to 17 Jan 2025 and 23 Jan to 7 Feb 2025** for courses with vacancies. The application results for the 3<sup>rd</sup> Phase will be known between **14 Jan to 23 Jan 2025** and **23 Jan to 13 Feb 2025**.

\*N(A) students progressing to ITE

For further enquiries, N-Level school leavers can contact  
ITE Hotline: 1800-2222-111

# Key Pointers for Students on ITE's Joint Intake Exercise (JIE)

ALL students in N(T) and N(A) students (who are not progressing to 5N(A) or repeating 4N(A)) are eligible for JIE.  
Those who were unsuccessful in EAE are also eligible for JIE.

Participation in JIE Main Phase is key to securing a place in ITE!

Use all 12 JIE choices wisely, as competition for 3-year Higher Nitec courses is keen!

Do consult your teachers / ECG counsellors to help you make your choices!

Do use the Last Aggregate Score (LAS) published in ITE's admission portal to help you make your course choices.

If you have received an additional letter, then you are eligible for the Enhanced Foundation Programme (EFP).

If you are eligible for EFP, make sure you apply for both the EFP and the 2-year Nitec/3-year Higher Nitec!

The EFP helps to build the necessary literacy and numeracy foundations that will enable you to successfully complete your course!

If you are counter-offered a course, accept it first before appealing for another course you may be more interested in!

## STEP-BY-STEP INFORMATION FOR JIE APPLICATION

# Online Application for


2-Year Nitec and 3-Year Higher Nitec Courses


3-Year Nitec/4-year Higher Nitec Course with EFP

(for N(T) students with 0, 1 "N" pass)

1. Go to <https://www.ite.edu.sg>.

2. Click  icon.

3. Under JIE 'N', click  icon to link to the application website

Under JIE 'E', click  icon to link to the application website

4. At the application website:

- a) Enter NRIC / FIN and Date of Birth to start application. You may also apply using SingPass.
- b) Upon completion of application, applicants will receive their **web ID** and password.

## STEP-BY-STEP INFORMATION FOR JIE APPLICATION

# Checking of Posting Results/Accept Course Offer

2-Year Nitec and 3-Year Higher  
Nitec Courses

3-Year Nitec/4-year Higher Nitec  
Course with EFP  
(for N(T) students with 0, 1 "N" pass)

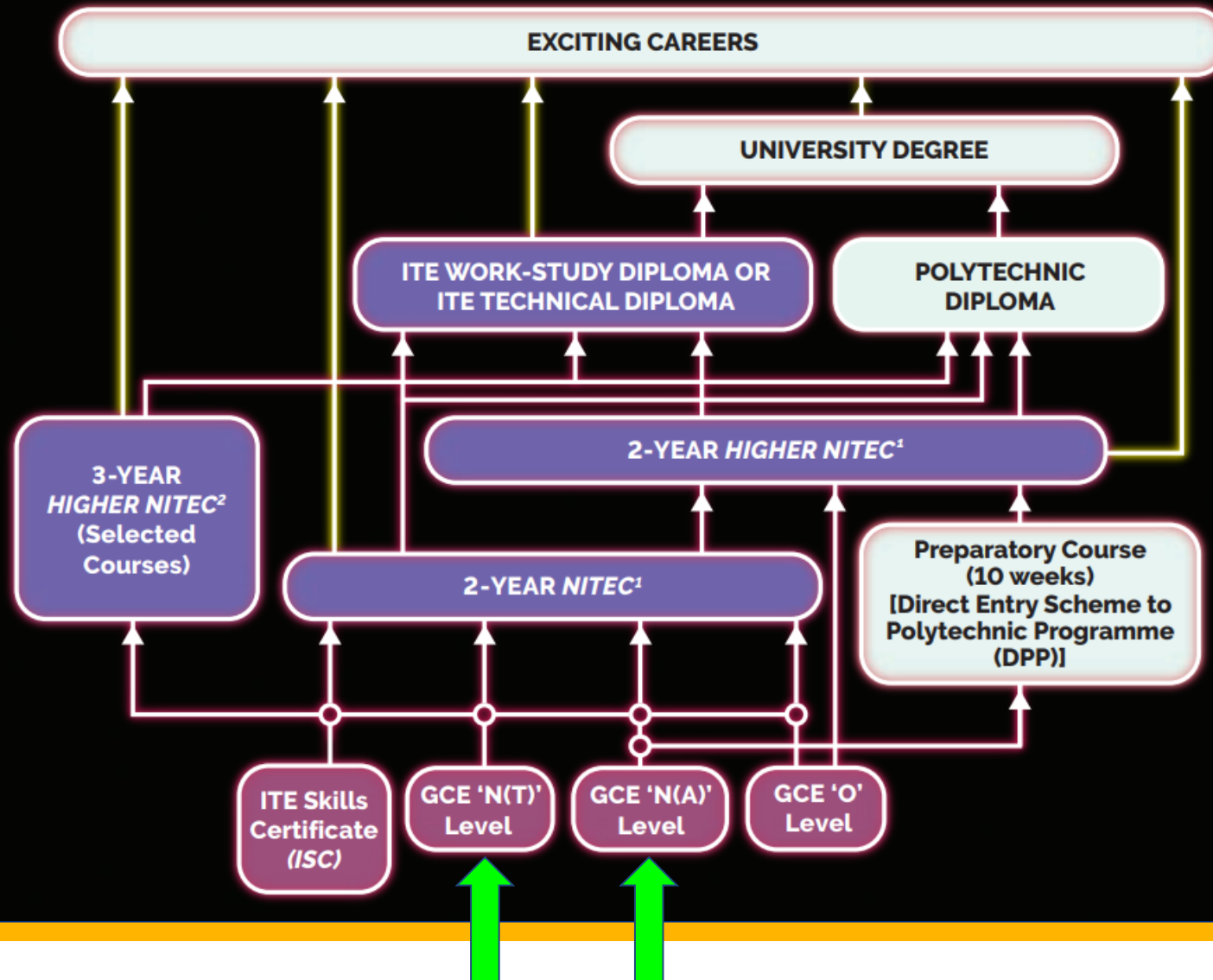
1. Go to <https://istudent.ite.edu.sg>.
2. Enter **web ID** and password.
3. Click '**Self-Service**' followed by '**Student Admission**' followed by '**View Application Results**' to view the application results and to accept course offer.

The above steps applies to all phases (refer to [Slide 11](#) for dates).  
For more details, please refer to ITE website.

# Post-Secondary Pathways and Educational and Career Guidance (ECG) Support



# PROGRESSION PATHWAYS



# 4N[A] and 4N[T]: Progression to ITE (JIE 'N' and JIE 'E')

- Students who wish to progress to ITE should **participate in JIE** (except for those with confirmed ITE EAE offers).
- For **courses that require interview**, please take note that **only one interview** will be granted to assess suitability.
  - Priority in selection for interview will be given to first-choice applicants, based on results for the course.
  - Students are advised to indicate this course as their first choice.
  - The interview will be on either **Mon 23 Dec or Thu 26 Dec 2024**, which you can check via the ITE application portal.



# HOW TO COMPUTE YOUR AGGREGATE POINTS FOR *NITEC* & 3-YEAR *HIGHER NITEC* COURSES WITH NORMAL (TECHNICAL) SUBJECTS

Normal (Technical) Grade	ITE Aggregate Points*
A	1
B	2
C	3
D	4
E/U	5

Type of Bonus Points	Number of Bonus Points Awarded
<b>CCA Grades:</b> 1) Excellent or Grades A1 – A2	2
2) Good or Grades B3 – C6	1

\* A lower aggregate point is indicative of better performance





# EXAMPLE OF AGGREGATE POINTS FOR A NORMAL (TECHNICAL) STUDENT

Normal (Technical) Results	
Name: Clare	
ENGLISH LANGUAGE	A
MATHEMATICS	A
DESIGN & TECHNOLOGY	B
SCIENCE	C
SOCIAL STUDIES	E
CCA GRADE	EXCELLENT

## My aggregate points (based on best 4 subjects)

English Language: 1 point

Mathematics: 1 point

Design & Technology: 2 points

Science: 3 points

CCA Grade: 2 bonus points

Aggregate points:

1+1+2+3 – 2 bonus points

= **5 points**

# HOW TO COMPUTE YOUR AGGREGATE POINTS FOR *NITEC* & 3-YEAR *HIGHER NITEC* COURSES WITH NORMAL (ACADEMIC) SUBJECTS

Normal (Academic) Grade	ITE Aggregate Points*
1, 2, 3	1
4	2
5	3
6/U	4

Type of Bonus Points	Number of Bonus Points Awarded
<b>CCA Grades:</b> 1) Excellent or Grades A1 – A2	2
2) Good or Grades B3 – C6	1

\* A lower aggregate point is indicative of better performance



# EXAMPLE OF AGGREGATE POINTS FOR A NORMAL (ACADEMIC) STUDENT

Normal (Academic) Results	
Name: Alex	
ENGLISH LANGUAGE	Grade 1
MATHEMATICS	Grade 2
ADDITIONAL MATHEMATICS	Grade 2
CHEMISTRY	Grade 3
PHYSICS	Grade 5
CCA GRADE	GOOD

## My aggregate points (based on best 4 subjects)

English Language: 1 point

Mathematics: 1 point

Additional Mathematics: 1 point

Chemistry: 1 point

CCA Grade: 1 bonus point

Aggregate points:

1+1+1+1 – 1 bonus points

= **3 points**

# 4N[A] and 4N[T]: Progression to ITE (EAE)

- Students with confirmed ITE EAE offers are expected to honour their offers, and are not allowed to apply for admission to ITE through JIE.
  - **4N[A]**: However, these students are **allowed to apply for PFP and DPP** if they meet the eligibility criteria.
  - 2025 DPP Admissions Exercise will open in Dec 2024
  - 2025 PFP Admissions Exercise will open in Jan 2025



# 4N[A]: Polytechnic Foundation Programme (PFP)

- 4(NA) students who obtained an ELMAB3 aggregate score of **12 points or less** may consider applying for **PFP**.
- Eligible students should **first progress to Sec 5N(A)** and then apply for PFP upon the release of the GCE O-Level results.
- ALL PFP-bound students are required to attend Sec 5N(A) classes up till Jan 2025.
- Eligible students will receive **Form P** on the **release of the GCE O-Level results in January 2025**. PFP applications will open at 1.30pm that day.



# 4N[A]: Progression to NAFA Foundation Programme (NFP)

- 4(NA) students who obtained an ELMAB3 aggregate score of **15 points or less** may consider applying for **NFP**.
- NFP Info Day: **18 Dec 2024 (2.30-5.30pm)**
  - Held at NAFA Campus 1, Wing B, Level 2, Seminar Room, 80 Bencoolen St, Singapore 189655
  - To register interest for NFP Info Day, please go to the NFP website for the schedule: <https://enrol.nafa.edu.sg/nfp>
  - Based on interview and aptitude admission



# 4N[A]: Direct-Entry-Scheme to Polytechnic Programme (DPP)

- 4(NA) students who obtained **19 points or less** may consider enrolling into two-year **Higher Nitec** courses at ITE through the **DPP**.
- DPP students who successfully complete their Higher Nitec courses and attain the minimum qualifying GPA are subsequently guaranteed a place in a polytechnic diploma course mapped to their Higher Nitec course.
- Students who are successful in their application for **DPP (Phase 1: Dec)** do not need to attend Sec 5 in January, as the DPP course starts in January.



# Additional Information – DPP and PFP

- One option for students who are interested in both the PFP and DPP (Phase 2: Jan) is to first progress to Sec 5N(A) and then apply for both the PFP and DPP (Phase 2) upon release of the GCE O-Level examination results in January 2025.
- Students who are offered a place in both the PFP and DPP may **only accept one course offer**.
- Students who accept both offers will have both offers voided. If their application to either the PFP or DPP is successful, they will withdraw from Sec 5N(A) by the end of January 2025.





# Additional Information – DPP and PFP

- For students who have already **applied for and accepted their DPP offer** prior to the release of the GCE O-Level examination results, the school will contact you to collect the **PFP eligibility form (Form P)** if you are eligible for PFP after the release of the GCE O-Level results.
- Students who decide to apply for and accept their PFP offer in January will need to **withdraw from the DPP course**. Applicants can apply for a refund of their DPP enrolment fees, subject to ITE's approval.



# 4N[A]: Progression to Sec 5(NA)

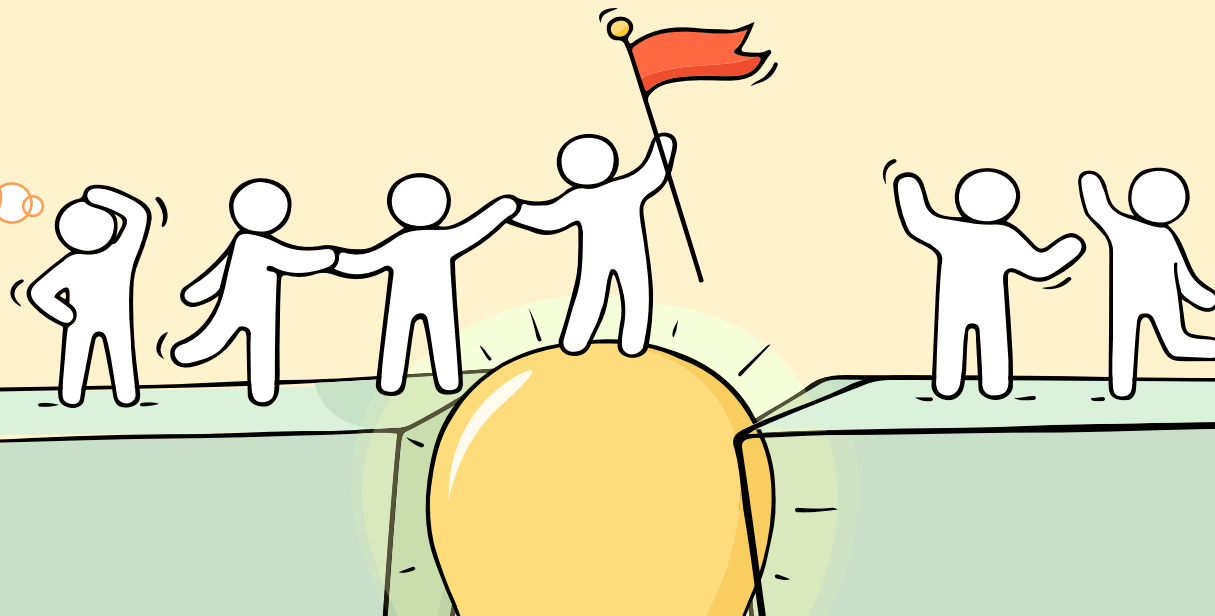
- 4(NA) students who obtained **19 points or less**;  
**and**
- Obtained **at least a Grade 5** for all subjects used  
in the computation of **ELMAB3**



# Reaching out for help is a sign of strength, not weakness.

If you have any questions about your options or are not coping well, do reach out to someone you trust and speak with them. It could be a parent/guardian, teacher, ECG Counsellor, School Counsellor or a friend that you can talk to.

*Is there  
someone we  
can speak  
with?*



# Support is readily available for you.

**Reach out to an ECG Counsellor!**

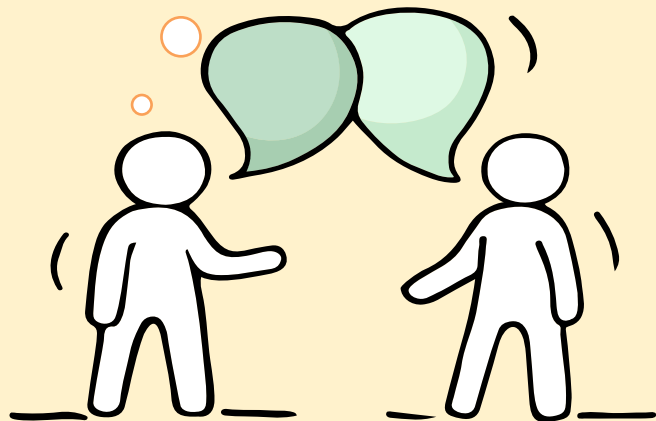
*Who can we go  
to for ECG  
advice?*

Make an appointment to speak  
with your ECG Counsellor in school.

**OR**

Make an ECG counselling  
appointment via the  
ECG Centre @ MOE (Grange Road)  
at

<https://go.gov.sg/moe-ecg-centre>



# ECG Support at CHIJ Secondary

- Approach your school teachers for general advice on education progression and course selection
- For additional support on education and course exploration, book an appointment with ECG counsellor, Ms Sharon Tay <https://go.gov.sg/chijnlevels>

**Mon to Wed (16 to 18 Dec ): 8.00am to 4.00pm  
(last booking)**

Choice of F2F/remote/phone (*do read your email reply for the zoom link & pw*)

Pls book your preferred timing (30 mins slot) :  
<https://go.gov.sg/chijnlevels>

Please get ready:

- **2025 JIE Booklet**
- Result Slip
- Form N



<https://go.gov.sg/chijnlevels>



**ECG Counsellor  
Ms Sharon Tay**

**Tay\_LIU\_KIAN\_SHARON@  
schools.gov.sg**

## RESOURCES FOR STUDENTS

# Additional Information For Students

Should you require further advice or assistance in your applications or future plans, please contact your teachers and/or ECG Counsellor.


For further inquiries, you may refer to the following hotlines and links for more information and advice on further education:

Institute of Technical Education (ITE)	
ITE Hotline (for ITE admissions and courses)	1800 2222 111 <a href="mailto:training@ite.edu.sg">training@ite.edu.sg</a>
ECG Centre @ MOE	
e-Appointment link	<a href="https://go.gov.sg/moe-ecg-centre">https://go.gov.sg/moe-ecg-centre</a>

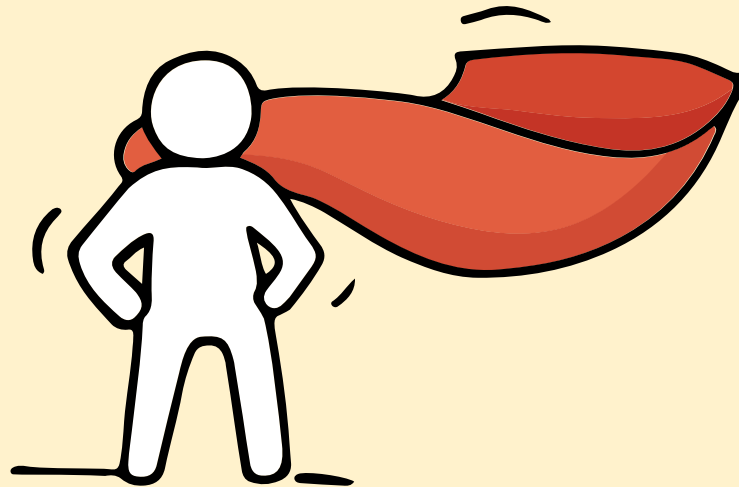
## RESOURCES FOR STUDENTS

# Additional Information For Students

The information listed in the table below will help you to make an informed decision on which choice of courses you could consider applying at ITE.

S/N	Information	Attachment/Link
1	ITE Factsheet 2024	 2024 JIEN Factsheet
2	ITE Course Booklet 2025	<a href="https://www.ite.edu.sg/courses/full-time-courses/download-ite-course-booklet">https://www.ite.edu.sg/courses/full-time-courses/download-ite-course-booklet</a>
3	Information on Progression Opportunities (From <i>Nitec</i> Courses to <i>Higher Nitec</i> and Technical diplomas)	<a href="https://www.ite.edu.sg/admissions/full-time-courses/nitec-and-3-year-higher-nitec/progression-opportunities">https://www.ite.edu.sg/admissions/full-time-courses/nitec-and-3-year-higher-nitec/progression-opportunities</a>
4	Information on Progression Opportunities (from <i>Higher Nitec</i> courses to diploma courses)	<a href="https://www.ite.edu.sg/admissions/full-time-courses/higher-nitec/academic-progression">https://www.ite.edu.sg/admissions/full-time-courses/higher-nitec/academic-progression</a>

Remember that while **everyone's educational journey is different, we can each have a fulfilling outcome!**





# Support is readily available for you.

There are other hotlines and chats available if you are more comfortable seeking help using these platforms. Scan the QR code below for a helpful resource.



**SOS** provides round-the-clock emotional support for those in distress, thinking of suicide or affected by suicide.

Call: **1767**  
**(24-hour helpline)**

Whatsapp: **9151 1767**  
**(24-hour Care Text)**

**TOUCHline** is a helpline to provide youths with emotional support and practical advice.

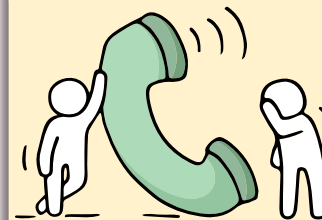
Call: **1800-377 2252**  
*Monday- Friday (Excluding Public Holidays):  
9am – 6pm*

**Community Health Assessment Team (CHAT)** provides personalised and confidential mental health checks and consultation for youths. To speak with a youth support worker, you can:

Visit: **CHAT Hub at \*SCAPE, #05-05**  
Call: **6493 6500/ 6501**  
Email: **CHAT@mentalhealth.sg**

**Carey** is an online platform by Care Corner that provides free mental health check-ins with mental health professionals. Find out more at:  
<https://carey.carecorner.org.sg/>

**mindline.sg** is an online platform that provides tools, tips and resources to help you manage your health and well-being. Find out more at:  
[www.mindline.sg](http://www.mindline.sg)



**eC2** is an e-Counselling Centre where you can talk to a trained counsellor about the issues you are facing, right where you are.

Chat with a counsellor at:  
[www.ec2.sg](http://www.ec2.sg)  
*Monday – Friday (Excluding Public Holidays):  
10am – 12pm & 2pm – 5pm*

# Reminder!

- ALL students (except those successful in their application for **DPP Phase 1**) are required to attend Sec 5N(A) classes up till Jan 2025.
- Report to school on Thu 2 Jan 2025 Hall of Faith by 7.30am



# Reminder on Important Dates!

## **JIE 'N' & JIE 'E'**

**Application:** Mon, 16 Dec 2024 (2.30pm) to Thur, 19 Dec 2024 (5pm)

**Interview for Courses (Aptitude based):** check ITE portal from 20 Dec 2024 (2pm)

**Release of results:** Mon, 30 Dec 2024 (from 9am)

## **JIE 'H' (DPP)**

**Application:** Mon, 16 Dec 2024 (2.30pm) to Thur, 19 Dec 2023 (5pm)

**Release of results:** Fri, 20 Dec 2024 (from 2pm)

## **PFP**

Be present at release of GCE O Level results in Jan 2025 to receive Form P.  
Application opens that day at 1.30pm.

**The N-Level examination is not the destination.  
It is part of your education journey.**



***“Whatever happens, be always at peace and trust in God.”  
- Blessed Nicolas Barré***