



# Release of GCE O-Level Examination Results

10 January 2025

**CONVENT OF THE HOLY INFANT JESUS  
SECONDARY**



# Prayer

Dear God,

We lay before You all our hopes and fears we have about today's outcome.

Grant us peace within us now as we await the results.

We thank You for whatever results we receive, as we trust in Your greater plan for us.

Help us to live in Your goodness and walk with You always.



# What you will receive today

## Sec 4 & 5s:

- a) GCE O Level Certificate
- b) Results Slip
- c) Form A (via email) – *contains results, eligible courses under JAE and JAE PIN/password*
- d) A copy of The Steeple
- e) Form P (*only for 4NA PFP-eligible students*)



## 2024 Sec 3 HMTL results

# Information on JAE Application (for 4E5N students only)



# Joint Admissions Exercise (JAE)

- Students who wish to apply for admission to junior colleges (JC), Millenia Institute (MI), polytechnics, and the Institute of Technical Education (ITE) may do so via the JAE using their GCE O-Level examination results.
- Eligible candidates will receive a **digital copy of Form A** via their registered email addresses **from 3pm on Fri, 10 Jan 2024**.
- All candidates eligible for JAE may also download a copy of Form A from the JAE-Internet System (JAE-IS) during the application period.



# Submitting Course Choices during JAE

- The JAE-IS will be accessible from 4pm on Friday, 10 January 2025, to 4pm on Wednesday, 15 January 2025.
- Applicants should submit their course choices through the JAE website at [www.moe.gov.sg/jae](http://www.moe.gov.sg/jae) using Singpass.
- Upon successful submission, the verification slip will be sent to the email address provided by the student in the JAE-IS. If you do not receive the verification slip email, you should login to JAE-IS to check on your application status.



Ministry of Education  
SINGAPORE

Name : TEST NAME 111 Address : 111 BUKIT BATOK EAST AVENUE 1 #11 -11 SINGAPORE 1111111 School Code : 1111	000684-3005 Centre Index No. : 222222217
---	---

Please apply your course choices by **DD/MM/YYYY, 04:00 PM.****Your 20XX GCE O-Level Examination results:**

ENGLISH LANGUAGE = A1, HIGHER CHINESE = A1, CHINESE = B3, MATHEMATICS = A2, ADDITIONAL  
 MATHEMATICS = A1, PHYSICS = B3, CHEMISTRY = B4, HUMANITIES (SOCIAL STUDIES, HISTORY) = A1,  
 LITERATURE IN ENGLISH = B3

CCA = EXCELLENT

**Your aggregate scores:**

JC	MI	Polytechnic				ITE		
L1R5	L1R4	ELR2B2-A	ELR2B2-B	ELR2B2-C	ELR2B2-D	ELB4-A	ELR1B3-B	ELR2B2-C
11	8	8	8	8	8	8	8	8

**Your eligible courses:**

- You meet the entry requirements for the below courses and are eligible to apply. However, a place in the course is not guaranteed as admission is based on merit, your choices and available vacancies.
- Course codes and descriptions can be found in [www.moe.gov.sg/jaecourses](http://www.moe.gov.sg/jaecourses).

**JC/MI:**

You are eligible for all JC/MI courses.

**Polytechnic/ITE:**

C27 C28 C29 C30 C31 C32 C34 C35 C36 C38 C41 C42 C43 C45 C46 C47 C49 C50 C51  
 C52 C54 C62 C65 C67 C69 C70 C71 C72 C73 C75 C80 C81 C85 C87 C89 C93 C94 C96  
 C97 C98 N11 N12 N13 N14 N15 N40 N41 N42 N43 N44 N45 N48 N50 N51 N53 N54 N55  
 N56 N57 N59 N60 N65 N67 N69 N71 N72 N73 N74 N81 N82 N83 N85 N88 N91 N93 N94  
 N96 N97 N98 R11 R12 R13 R14 R16 R17 R18 R19 R21 R22 R24 R25 R26 R28 R32 R33  
 R34 R35 R36 R37 R39 R40 R42 R43 R45 R46 R47 R48 R49 R50 R52 R54 R55 R56 R57  
 R58 R59 R60 R61 R62 R63 R64 R65 S28 S29 S30 S31 S32 S38 S40 S42 S47 S48 S50  
 S53 S54 S63 S64 S66 S67 S68 S69 S70 S71 S73 S74 S75 S76 S88 S89 S90 S91 S94  
 S95 S98 S99 T01 T02 T04 T07 T08 T09 T10 T13 T18 T20 T22 T23 T25 T26 T28 T29  
 T30 T33 T35 T38 T40 T43 T45 T48 T50 T51 T53 T56 T58 T59 T60 T62 T63 T64 T65  
 T66 T67 T68 T69 T70 T71 V10 V11 V12 V13 V14 V15 V16 V17 V18 V19 V20 V21 V22  
 V23 V24 V25 V26 V27 V28 V29 V30 V35 V39 V40 V41 V42 V44 V47 V49 V52 V54 V55  
 V60 V61 V62 V63 V64 V65 V66 V67 V68 V70 V71 V72 V73 V74 V75 V77 V78 V80 V81  
 V82 V84 V85 V86 V87 V88 V89 V90 V91 V92 V93 V94 V96 V97 V98

Course codes starting with:  
 C - Nanyang Polytechnic  
 N - Ngee Ann Polytechnic  
 R - Republic Polytechnic  
 S - Singapore Polytechnic  
 T - Temasek Polytechnic  
 V - Institute of Technical Education (ITE)

# Submitting Course Choices during JAE

## For Students who applied for DSA-JC / Poly EAE:

- Students who have accepted their DSA and EAE offers and have met the eligibility criteria / minimum entry requirements are not eligible to participate in JAE.
- Students who have accepted their offers but did not meet eligibility criteria / minimum entry requirements are eligible to apply for Polytechnic admission via JAE for courses which they are eligible for.





# More Information about JAE

- Applicants can find more information on the following websites:
  - JAE website for more details on the JAE ([www.moe.gov.sg/jae](http://www.moe.gov.sg/jae))
  - List of courses offered in 2024 JAE (<https://www.moe.gov.sg/-/media/files/post-secondary/2024-jae/2024-jae-courses.pdf>)
  - SchoolFinder for details of the offerings by and previous entry score ranges for JCs and MI ([www.moe.gov.sg/schoolfinder](http://www.moe.gov.sg/schoolfinder))
  - CourseFinder for courses offered by the polytechnics and ITE, based on aggregate type and area of interest ([www.moe.gov.sg/coursefinder](http://www.moe.gov.sg/coursefinder))



# JAE Application Results

- The posting results of the JAE application are scheduled for release on **Tuesday, 4 February 2025** through the following modes:
  - SMS to the Singapore mobile phone number provided by the applicant during application
  - JAE-IS, which is accessible using Singpass
- To appeal for a place in a JC or MI, approach the school directly.
- To appeal for a place in a polytechnic or ITE, apply on the JAE Online Appeal Portal from 9am on Tuesday, 4 Feb to 4pm on Fri 7 Feb.



# JAE Application Results

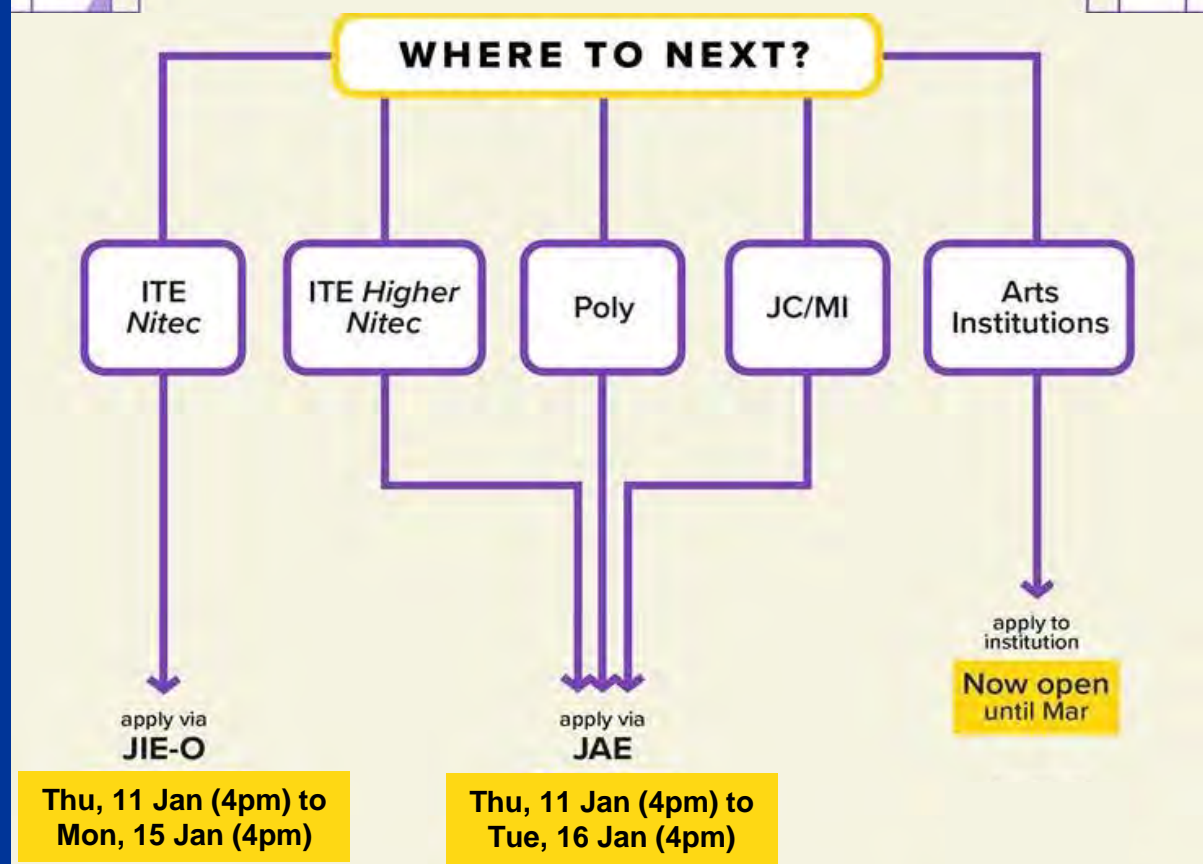
- **JCs and MI:** Students are to report to their posted institutions on **Wednesday, 5 February 2025** in your secondary school uniform.
  - If students are unable to report to their posted JC or MI on the first day of school due to valid reasons, they should contact their posted school directly to confirm that they are taking up the place.
- **Polytechnics:** Students will receive an email or package via mail on the enrolment details by **end-February 2025**.
- **ITE:** Students will receive an email on the enrolment details on **Tuesday, 4 February 2025**.



# Post-Secondary Pathways and Educational and Career Guidance (ECG) Support



# Hey, Sec 4 Express & Sec 5N(A) students!



# 4E5N: JC/MI

- **JC:** L1R5 gross aggregate score of **20 points or better** *(excluding bonus points)*
  - If you have applied for DSA-JC, you are eligible for admission to your chosen JC if your gross aggregate score is 20 points or less. You will not be eligible to apply for JAE.
- **MI:** L1R4 gross aggregate score of **20 points or better** *(excluding bonus points)*



# 4E5N: JC/MI Open House



**TEMASEK JUNIOR COLLEGE**  
**JC OPEN HOUSE 2025**

**14 JAN 2025, TUESDAY**  
**12:30PM - 4PM**  
2 TAMPINES AVE 9  
SINGAPORE 529564

TEMASEK JUNIOR COLLEGE

The poster features a vibrant yellow and orange background with a sunburst at the top. Two cartoon characters, one orange and one green, are running towards the center. The Temasek Junior College logo is at the bottom.



**CONVENT OF THE HOLY INFANT JESUS**  
**SECONDARY**



# 4E5N: JC/MI Open House

SAJC Open House 2025 | 9 am-3 pm | 11th January, 2025, Saturday



## Highlights

Dialogue with School Leaders  
9.30 am | 11.30 am | 1.30 pm

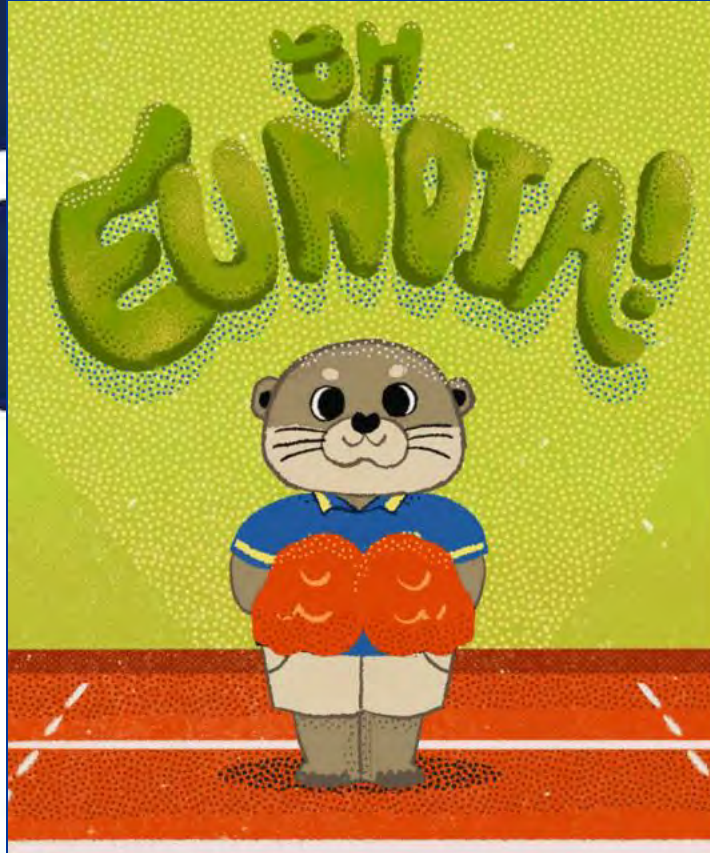
Shuttle Bus Service  
Potong Pasir MRT Exit C  
Every 20 mins from 9 am

CCA & Subject Booths ||  
Student Performances  
All Day!

PW Student Sharing -  
10am, 12pm, 1.45pm

Sample Lessons -  
Economics - 11 am  
General Paper - 1pm

Treats & Goodie  
bags for visiting  
students!



Eunioia Junior College

# OPEN HOUSE

11 Jan 2025  
10 am – 2 pm

Discover more at  
[eunioiajc.moe.edu.sg/oh](http://eunioiajc.moe.edu.sg/oh)



CONVENT OF THE HOLY INFANT JESUS  
SECONDARY



<http://www.standrewsjc.moe.edu.sg>

[www.facebook.com/standrewsjc](https://www.facebook.com/standrewsjc)

[@sajc\\_official](https://www.instagram.com/sajc_official)



# 4E5N: JC/MI Open House

# DUNMAN HIGH



## JAE OPEN HOUSE

11 JAN 2025 (SAT)  
0900 - 1300

Nearest Carpark: Blk 14A  
Kampong Arang Road S(432014)

[dunmanhigh.moe.edu.sg](http://dunmanhigh.moe.edu.sg)



# NANYANG JC OPEN HOUSE 2025

*Different Stories One Nanyang*

11 Jan 2025

9am - 3pm



[nanyangjc.moe.edu.sg](http://nanyangjc.moe.edu.sg) [www.facebook.com/Nanyangjc](https://www.facebook.com/Nanyangjc) [hey\\_nanyang](https://www.instagram.com/hey_nanyang) [NanyangJuniorCollegechannel](https://www.youtube.com/channel/UC...)

**CONVENT OF THE HOLY INFANT JESUS  
SECONDARY**



# 4E5N: JC/MI Open House Dates

Anderson Serangoon JC	14 Jan (10am-5pm)
Anglo-Chinese JC	13 Jan (12.30-5pm)
Catholic JC	11 Jan (10am-3pm)
Dunman High School	11 Jan (10am-2pm)
Eunoia JC	11 Jan (10am-2pm)
Hwa Chong Institution	14 Jan (12-4pm)
Jurong Pioneer JC	13 Jan (9am-4pm)
Millenia Institute	14 Jan (12pm-5pm)
Nanyang JC	11 Jan (9am-3pm)

National JC	11 Jan (10am-2pm)
Raffles Institution	14 Jan (10am-2.30pm)
River Valley High	13 Jan (2-5pm)
St Andrew's JC	11 Jan (9am-3pm)
Tampines Meridian JC	11 Jan (10am-2.45pm)
Temasek JC	14 Jan (12.30-4pm)
Victoria JC	11 Jan (9am-1pm)
Yishun Innova JC	13 Jan (10am-5pm)



# 4E5N: Open House Dates (Others)

<b>International Baccalaureate (IB)</b>	
Anglo-Chinese School (Independent)	13 Jan (10-11.30am)
St. Joseph's Institution	11 Jan (9am-3pm)

<b>Arts Institutions</b>	
Nanyang Academy of Fine Arts (NAFA)	17 – 18 Jan
LASALLE	17 – 18 Jan



# 4E5N: Polytechnics

You will need to meet **both** of the following requirements:

- Net ELR2B2 score of **26 points or better**
- Minimum Entry Requirements (MERs) for the respective polytechnic courses
  - If you have applied for Polytechnic EAE, you are eligible for admission to your chosen course if meet both requirements above. You will not be eligible to apply for JAE.



# 4E5N: Progression to ITE

- **4E5N:** Net ELR2B2 score of **36 points or better** and **minimum entry requirements of course**
  - Students who had accepted conditional offers to an ITE course through the ITE EAE in 2023 and have their offers confirmed based on their GCE O-Level examination results will not be eligible to participate in the JAE.
  - Your EAE offers are confirmed if they meet the subject-specific Minimum Entry Requirements for the course.



# Reminder on Important Dates!

**JAE ([www.moe.gov.sg/jae](http://www.moe.gov.sg/jae))**

**Receive Form A :** Fri, 10 Jan (3pm) *[via email or JAE-IS]*

**Application:** Fri, 10 Jan (4pm) to Wed, 15 Jan (4pm) *[via JAE-IS]*

**Release of results:** Tue, 4 Feb *[via SMS or JAE-IS]*

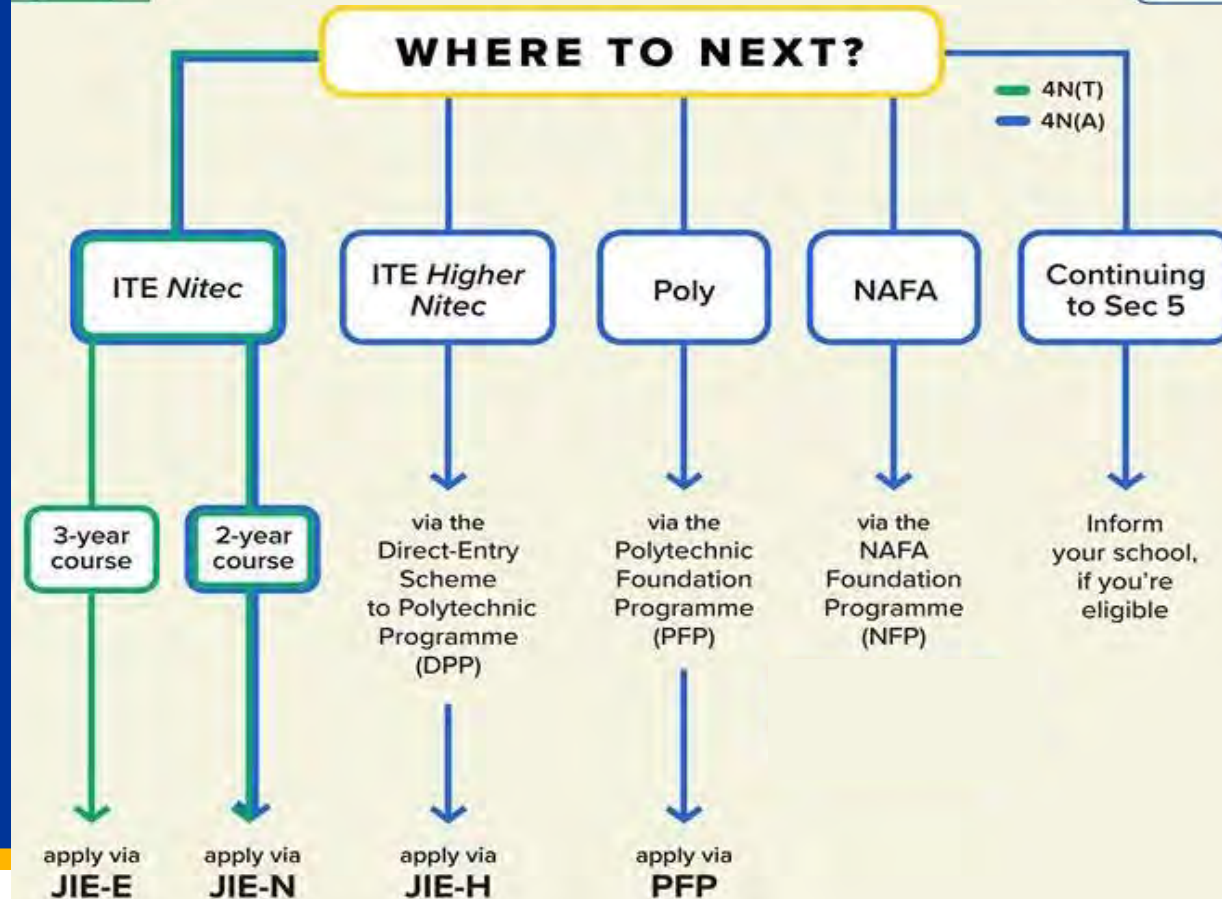
## **Reporting Info:**

JCs/MI: Wed, 5 Feb (in secondary school uniform)

Polytechnics: receive email or package on enrolment details by end-Feb

ITE: receive email on enrolment details on Tue, 4 Feb

# Hey, Sec 4N(A) Students!



# 4N[A]: Polytechnic Foundation Programme (PFP)

- The PFP is an alternative to the Secondary 5 N(A) year. It is a one-year foundation programme at the polytechnics that offers a practice-oriented approach to prepare students for entry into the relevant diploma courses.
- Students are eligible to apply for the PFP if they obtain a raw **ELMAB3 aggregate of 12 points or lower**, and **meet the subject-specific requirements for their chosen course**.





# 4N[A]: Polytechnic Foundation Programme (PFP)

- PFP-eligible students will receive a copy of Form P. Each copy of Form P contains a unique password. Interested students should use the respective passwords to submit their applications online via the PFP website at <https://pfp.polytechnic.edu.sg/PFP/index.html>.
- **Applications** for the PFP will be open from 1.30pm on Friday, 10 January 2025, to 4pm on Wednesday, 15 January 2025.



# 4N[A]: Polytechnic Foundation Programme (PFP)

- The **PFP posting results** will be released at **1.30pm on Wednesday, 22 January 2025** through the PFP website. Students will thereafter be required to indicate whether they wish to accept, reject, or appeal for a change of course **by 4pm on Monday, 27 January 2025**.
- Please note that eligibility to apply for PFP does not guarantee admission, which is subject to availability of vacancies and based on merit.
- The last day of school for Sec 5 students who have accepted a place in the PFP will be on Friday, 24 January 2025. Students will be informed by the respective polytechnics on the enrolment dates for the PFP.



# 4N[A]: Direct-Entry-Scheme to Polytechnic Programme (DPP)

- The DPP prepares students for progression into selected polytechnic diploma courses via a two-year Higher Nitec course at ITE.
- Students are eligible to apply if they obtain a **raw ELMAB3 aggregate of 19 points or lower, and meet the subject specific requirements for their chosen course.**
- Eligible Secondary 4 N(A) students may submit their DPP applications online via the DPP application portal at [www.ite.edu.sg/apply-for-ite-courses](http://www.ite.edu.sg/apply-for-ite-courses).



# 4N[A]: Direct-Entry-Scheme to Polytechnic Programme (DPP)

Key Activity	Period for 2-Year and 3-Year Nitec Courses, and 3-Year and 4-year Higher Nitec courses	Remarks
<b><u>3rd Phase (Final Top-up Phase)</u></b>		
Application	1 <sup>st</sup> Top-up Phase Application - 10 Jan to 17 Jan 2025 2 <sup>nd</sup> Top-up Phase Application - 23 Jan to 7 Feb 2025	Apply through the Internet at <a href="https://istudent.ite.edu.sg">https://istudent.ite.edu.sg</a> with NRIC / FIN and Date of Birth. You may also apply using SingPass.
Release of Results	1 <sup>st</sup> Top-up Phase - 14 Jan to 23 Jan 2025 2 <sup>nd</sup> Top-up Phase - 23 Jan to 13 Feb 2025	Check results at <a href="https://istudent.ite.edu.sg">https://istudent.ite.edu.sg</a> with web ID and password
Acceptance of Course Offer Period	1 <sup>st</sup> Top-up Phase - 14 Jan to 23 Jan 2025 2 <sup>nd</sup> Top-up Phase - 23 Jan to 13 Feb 2025	Accept course offer at <a href="https://istudent.ite.edu.sg">https://istudent.ite.edu.sg</a> with web ID and password
<b>Jan 2025 Intake Term Commencement Date: <u>13 Jan 2025</u></b>		



# 4N[A]: Direct-Entry-Scheme to Polytechnic Programme (DPP)

ITE  
Institute of Technical Education

Who We Are ▾ Colleges ▾ Courses ▾ Admissions ▾ Life@ITE ▾ Employment

**LEARN & GROW WITH ITE**  
DEEP SKILLS • DEEP EXPERIENCE • DEEP PARTNERS  
A NATIONALLY RECOGNISED WORK-STUDY DIPLOMA

Learn & Grow with ITE

Apply for ITE Courses ↗ Course Finder ↗

I am a/an...

Secondary School Student ITE Student Parent Adult Learner

## Intake Exercises for ITE Courses

Full-Time 2-Year *Higher Nitec* Courses (Apr 2024 Intake)

For GCE 'O' Applicants (JAE)

For *Nitec* Progression to *Higher Nitec* (NCHN)

Full-Time 2-Year *Higher Nitec* Courses (Jan 2024 Intake)

Direct Entry Scheme to Polytechnic Programme (DPP) (JIE 'H')

Apply Now

Full-Time 3-Year *Higher Nitec* / 2-Year *Nitec* Courses (Jan 2023 Intake)

For GCE 'N' Applicants (JIE 'N')

Apply Now

For GCE 'O' Applicants (JIE 'O')

For ISC Progression to 3-Year *Higher Nitec* / 2-Year *Nitec* (ISCJ)

Apply Now

Full-Time 4-Year *Higher Nitec* Course with Enhanced Foundation Programme and 3-Year *Nitec* Courses with Enhanced Foundation Programme (Jan 2024 Intake)

For GCE 'N' Applicants (JIE 'E')

Apply Now

CONVENT OF THE HOLY INFANT JESUS  
SECONDARY



# Additional Information – DPP and PFP

- Students who have accepted a place in DPP Phase 1 and 2 in December but decide to take up a PFP offer now must withdraw from the DPP first before they are able to take up the PFP offer.
- DPP-enrolled students should check with their ITE class advisor for more details on the DPP withdrawal process and deadlines for withdrawal.



# Reminder on Important Dates!

## **Polytechnic Foundation Programme (PFP)**

**Application:** Fri, 10 Jan (1.30pm) to Wed, 15 Jan (4pm)

**Release of results:** Wed, 22 Jan (1.30pm)

**Acceptance of offer:** Wed, 22 Jan (1.30pm) to Mon, 27 Jan (4pm)

**Start of PFP course:** Apr 2025 (*Students will be informed by the respective polytechnics on the enrolment dates for the PFP*)

## **Direct-Entry-Scheme to Polytechnic Programme (DPP)**

**Application:** 10 to 17 Jan (1<sup>st</sup> top up) and 23 Jan to 7 Feb (2<sup>nd</sup> top up)

**Release of results:** 14 to 23 Jan (1<sup>st</sup> top up) and 23 Jan to 13 Feb (2<sup>nd</sup> top up)

**Start of DPP course:** 10-week preparatory course in Jan 2025, then 2-year Higher Nitec training in Apr 2025

## ECG at CHIJ Secondary

- Approach your school teachers for general advice on education progression and course selection
- For additional support on education and course exploration, book an appointment with Senior ECG Counsellor, Ms Sharon Tay

**10 January on site support**

**14 January 8.00am to 5.00pm**

Choice of remote/F2F/phone

Pls book your preferred timing:

**<https://go.gov.sg/chijolevels>**



### Before the session:

- Do your course exploration and shortlisting
- Jot down any questions
- Find out your CCA grade

### Please get ready:

- Result Slip
- Form A /Form P
- JAE 2025 e-booklet

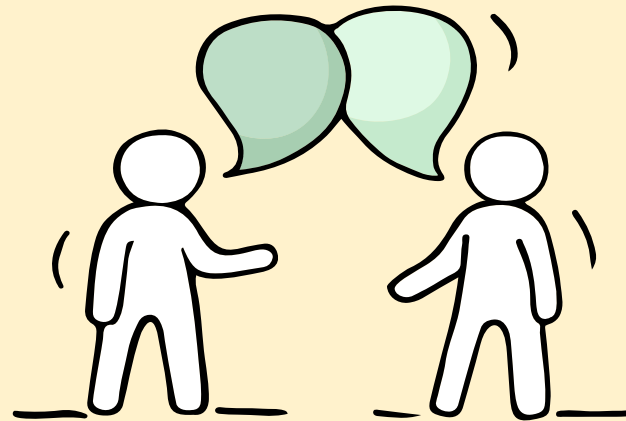


## ECG Support at MOE

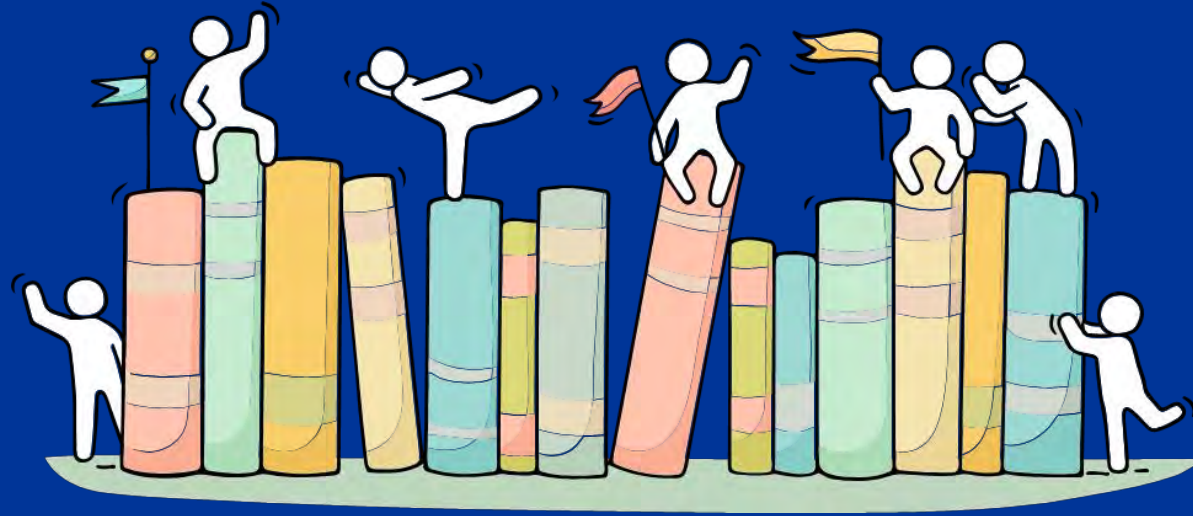
E-appointment system: <https://go.gov.sg/moe-ecg-centre>

Online/Phone Counselling services: 6 Jan to 16 Jan 2025

(Weekdays: 9am to 5pm; Saturdays: 9am to 12 pm)



**The O-Level examination is not the destination.  
It is part of your education journey.**



***“Whatever happens, be always at peace and trust in God.”  
- Blessed Nicolas Barré***